



Energy Department Prime Minister's Office



# **EDPMO**

## **Brunei Industry Group - Construction Engagement**

**Oct 2015**



# Safety Briefing

- **No drills planned for today**
- **The alarm is a continuous ringing of a bell**
- **In an emergency we evacuate in an orderly fashion**
- **Follow one of the ushers**
- **Assembly Point A**

**Mobile phones on silent mode please**



## **Recital of Doa Selamat**

# **DOA SELAMAT**



## AGENDA

<b>1000 – 1030 hours:</b>	<b>Registration</b>
<b>1030 – 1035 hours:</b>	<b>Safety Briefing</b>
<b>1035 – 1040 hours:</b>	<b>Doa Selamat</b>
<b>1040 – 1050 hours:</b>	<b>Opening Remarks</b>
<b>1050 – 1115 hours:</b>	<b>Legislative Requirements</b>
<b>1115 – 1130 hours:</b>	<b>HSE in 2016</b>
<b>1130 – 1145 hours:</b>	<b>Q &amp; A</b>
<b>1200 hours:</b>	<b>END</b>



# OPENING REMARKS



# INTRODUCTIONS

## HSE Team



## AGENDA

<b>1000 – 1030 hours:</b>	<b>Registration</b>
<b>1030 – 1035 hours:</b>	<b>Safety Briefing</b>
<b>1035 – 1040 hours:</b>	<b>Doa Selamat</b>
<b>1040 – 1050 hours:</b>	<b>Opening Remarks</b>
<b>1050 – 1115 hours:</b>	<b>Legislative Requirements</b>
<b>1115 – 1130 hours:</b>	<b>HSE in 2016</b>
<b>1130 – 1145 hours:</b>	<b>Q &amp; A</b>
<b>1200 hours:</b>	<b>END</b>



## **LEGAL**

# **HSE LEGISLATIVE REQUIREMENTS IN BRUNEI DARUSSALAM**





## Background

**Workplace Safety and Health Order 2009 (WSHO)  
and its Regulations  
What does it mean for **YOU**?**



## WSHO – What is it?

The WSHO is the highest level safety and health legislation in Brunei  
It is the **enabling framework** for all other S&H regulations

WSHO

Applies to  
All workplaces in Brunei

10  
REGULATIONS



Apply to  
All workplaces in Brunei  
Incl Offshore Onshore facilities

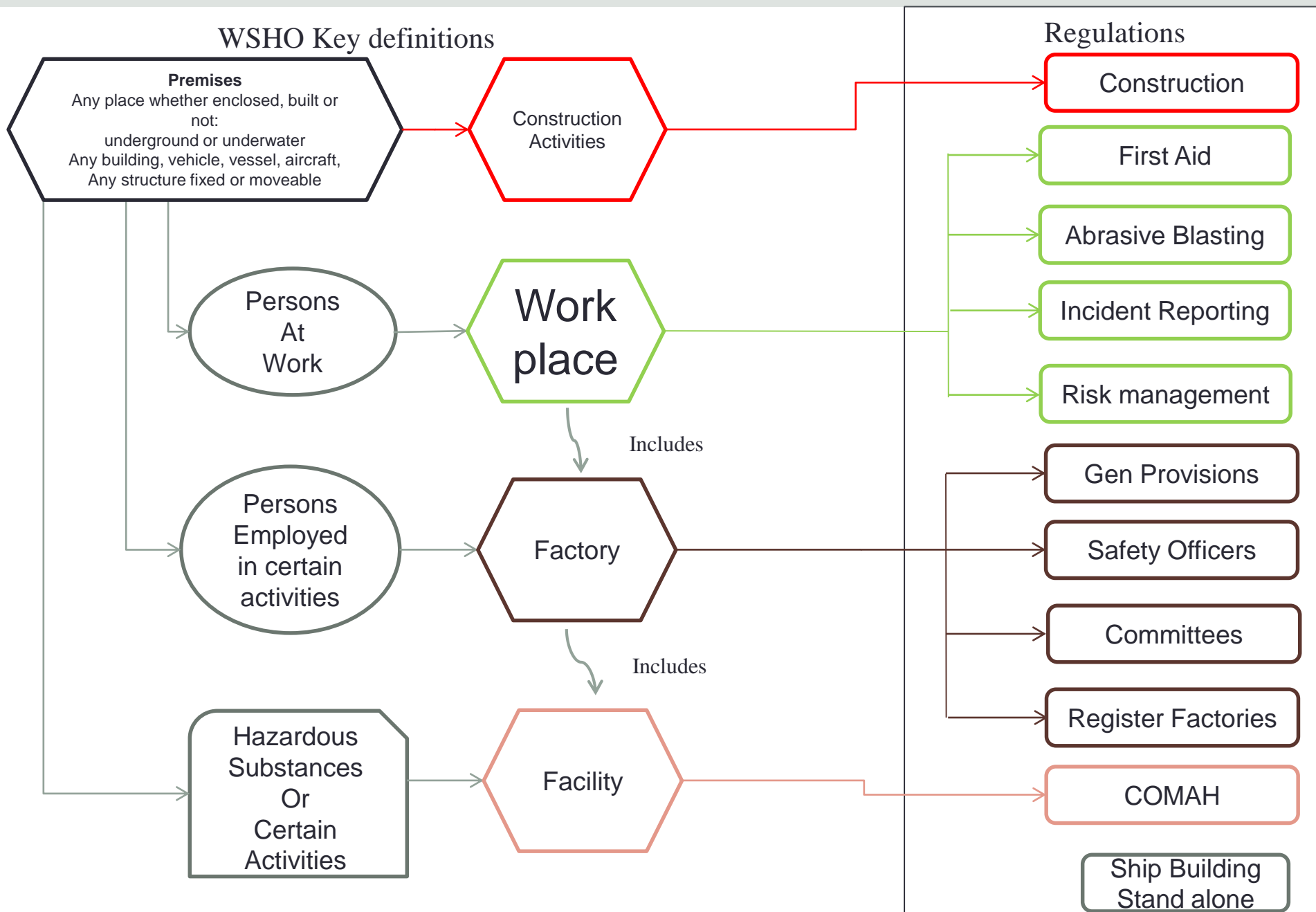
Control of Major  
Accident Hazards  
(COMAH) regs



Applies only to  
Offshore Onshore facilities

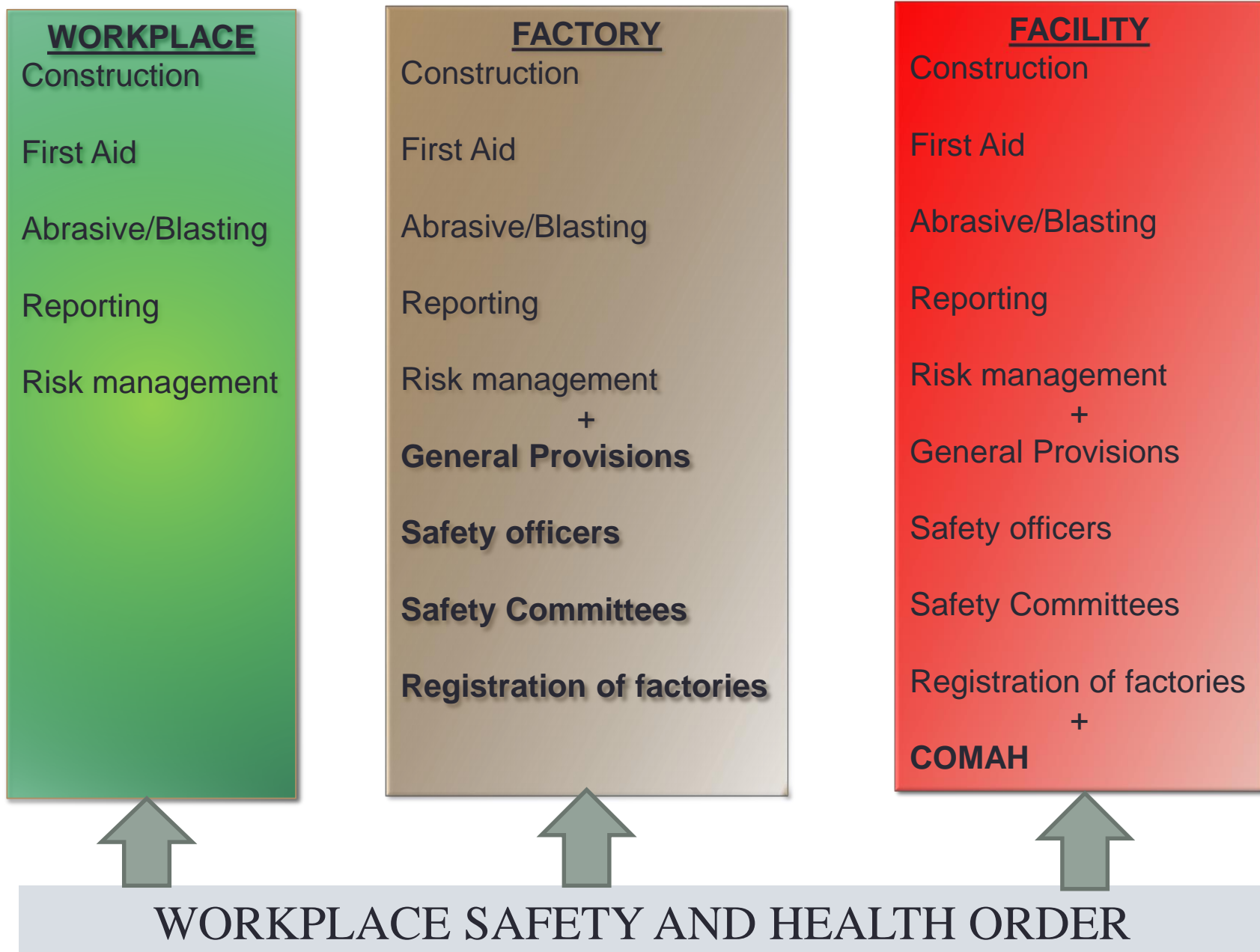


# How Does It All Fit Together?





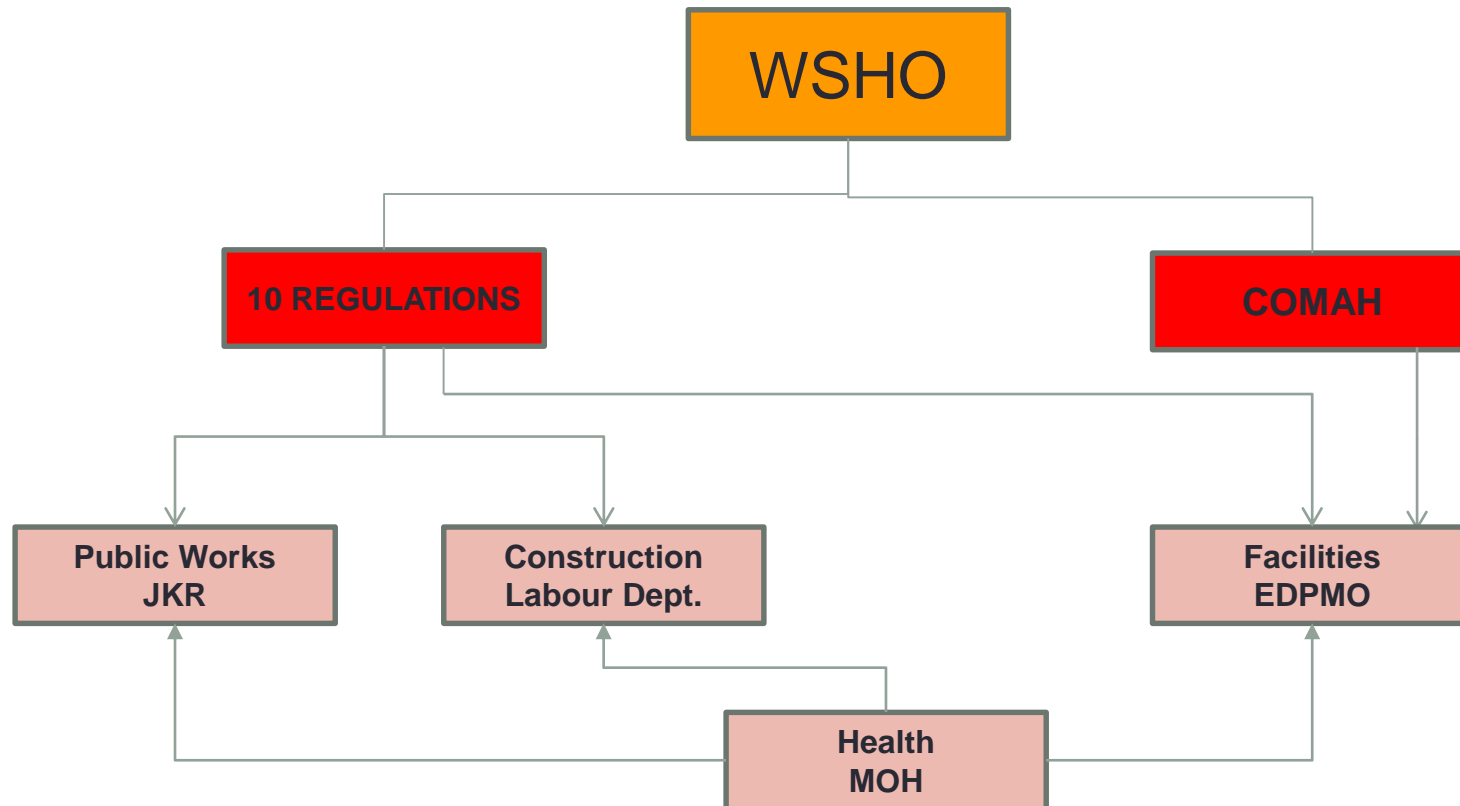
# Where Do The Regulations Apply?





## WSHO – Who is the Regulator?

The WSHO give powers to the Commissioner of Labour to regulate all S&H matters related to the WSHO. However he can delegate those powers.





## What do the Order and regulations require?

WSHO – Implemented 1 August 2013

### Clause 12: Duties of Employers.

(1) It shall be the **duty of every employer** to take, so far as is reasonably practicable, such measures as are necessary to **ensure the safety and health of his employees at work**.

(2) It shall be the duty of every employer to take, so far as is reasonably practicable, such **measures as are necessary to ensure the safety and health of persons (not being his employees) who may be affected by any undertaking carried on by him at the workplace**.



## WSHO – When will the regulations go live?

<b>WSHO</b>	<b>Order</b>	<b>1 AUG 2013</b>
<b>WSHO amendment</b>	<b>Order</b>	<b>1 JAN 2014</b>
<b>Construction</b>	<b>regulations</b>	<b>12 JUNE 2014</b>
<b>General Provisions</b>	<b>regulations</b>	
<b>Incident Reporting</b>	<b>regulations</b>	
<b>Risk management</b>	<b>regulations</b>	
<b>Safety Officers</b>	<b>regulations</b>	
<b>Safety Committees</b>	<b>regulations</b>	<b>IN DRAFT</b>
Registration of factories	regulations	
First Aid	regulations	
Abrasive/Blasting	regulations	
Ship Building	regulations	
<b>COMAH</b>	<b>regulations</b>	<b>1 JAN 2014</b>



## AGENDA

<b>1000 – 1030 hours:</b>	<b>Registration</b>
<b>1030 – 1035 hours:</b>	<b>Safety Briefing</b>
<b>1035 – 1040 hours:</b>	<b>Doa Selamat</b>
<b>1040 – 1050 hours:</b>	<b>Opening Remarks</b>
<b>1050 – 1115 hours:</b>	<b>Legislative Requirements</b>
<b>1115 – 1130 hours:</b>	<b>HSE in 2016</b>
<b>1130 – 1145 hours:</b>	<b>Q &amp; A</b>
<b>1200 hours:</b>	<b>END</b>





## Workplace Safety and Health (Construction) Regulations, 2014

The Regulation sets the general framework to which all companies must comply.

### Safety and health management system

4. (1) It shall be the duty of the occupier of a worksite to implement and maintain at all times a **safety and health management system** for the purpose of ensuring the **safety and protecting the health of every person within the worksite**, whether or not the person is at work or is an employee of the occupier.

### Workplace safety and health co-ordinator /officer

6. ...**wsh co-ordinator** shall be appointed in every worksite where the contract sum.....is less than \$10 million. (over \$ 10 million you would require a **WSH Officer**, as per the WSH Regulations)

- This person would be trained, competent with at least 2 years practical experience relevant to the work

### Safety and health training

9. Duty to provide **adequate safety and health training** to any person who carries out manual work at the work site



## Workplace Safety and Health (Construction) Regulations, 2014

The Regulation sets the general framework to which all companies must comply.

### Structures and supports

20. (1) It shall be the **duty of the occupier of a worksite** with a supporting structure to take, so far as reasonably practicable, such measures as are necessary to ensure that the supporting structure complies....

(2) **sound design.....strength.....properly maintained**

(3) **withstand any foreseeable load** likely to be imposed on it

### Falling hazards

22 (1) It shall be the **duty of the occupier of a worksite** to take, so far as reasonably practicable, such measures as are necessary to comply....**fall a distance of more than 2 metres.**

(2) **effective guard-rails, barriers** or other equally effective means to prevent fall.

### Personal protective equipment

33. (1) It shall be the **duty of...employer**



## What is the Regulator's Role?

The regulatory role covers

### Proactive

- **Safety Management System review**
- **Inspections**
- HSE Guidance Advise Info - **forums**
  - external public website
  - international workshop/seminars/assignment

### Enforcement

- **Legal Notice**
- **Remedial Order**
- **Stop Work Order**
- **Fine and/or imprisonment upon prosecution**



## Inspection

### Workplace Safety and Health Order 2009 (Amended)

#### PART IX

#### INSPECTIONS AND OTHER POWERS OF ENFORCEMENT

##### Powers of inspectors.

41. (1) An inspector shall, for the purposes of the execution of this Order, have power –

(a) to **enter, inspect and examine any workplace at any time**;

(2) Any person who is found in a workplace shall render all necessary **assistance and co-operation** to the inspector as is necessary for an entry, inspection, examination, inquiry, the taking of samples or otherwise for the exercise of his powers under this Order in relation to that workplace.

(4) Any person who –

(a) obstructs or delays an inspector in the exercise of any of his powers under this section; is guilty of an **offence** and liable on conviction to a **fine** not exceeding \$5,000, **imprisonment** for a term not exceeding 6 months or both.



## AGENDA

<b>1000 – 1030 hours:</b>	<b>Registration</b>
<b>1030 – 1035 hours:</b>	<b>Safety Briefing</b>
<b>1035 – 1040 hours:</b>	<b>Doa Selamat</b>
<b>1040 – 1050 hours:</b>	<b>Opening Remarks</b>
<b>1050 – 1115 hours:</b>	<b>Legislative Requirements</b>
<b>1115 – 1130 hours:</b>	<b>HSE in 2016</b>
<b>1130 – 1145 hours:</b>	<b>Q &amp; A</b>
<b>1200 hours:</b>	<b>END</b>



## **WAY FORWARD 2016**

# **HEALTH, SAFETY AND ENVIRONMENT IN 2016**



## **HSE IN 2016**

- **New Legislation: Environmental Protection & Management Order**  
**Electrical Regulations**  
**Environmental Impact Assessment Regulations**  
**Statutory Body Order**
- **Registration of Construction & Scaffolding Companies**
- **Inspection visits to review Safety Management Systems onsite**
- **Review of Industry practices and standardization**



## HSE IN 2016

### **ACTION:**

**All Construction and Scaffolding Industry companies working in the Oil & Gas, Energy Sectors in Brunei Darussalam to provide [company particulars](#) to EDPMO (written letter)**

**EDPMO HSE will arrange site visits to [review safety management systems](#), practices and workplace safety procedures**

### **EDPMO CONTACT:**

**[Hjh Suhana Binti Hj Md. Daud @ Mohd. Daud \[suhana.daud@jpm.gov.bn\]](#)**





## AGENDA

<b>1000 – 1030 hours:</b>	<b>Registration</b>
<b>1030 – 1035 hours:</b>	<b>Safety Briefing</b>
<b>1035 – 1040 hours:</b>	<b>Doa Selamat</b>
<b>1040 – 1050 hours:</b>	<b>Opening Remarks</b>
<b>1050 – 1115 hours:</b>	<b>Legislative Requirements</b>
<b>1115 – 1130 hours:</b>	<b>HSE in 2016</b>
<b>1130 – 1145 hours:</b>	<b>Q &amp; A</b>
<b>1200 hours:</b>	<b>END</b>



**B.I.G.**

**Q & A**

# Government Resources

- Labour Department:  
<http://www.labour.gov.bn>
- Attorney General's Chamber:  
<http://www.agc.gov.bn/>
- Energy Department Prime Minister's Office:  
<http://www.energy.gov.bn>

# EDPMO Website - HSSE

EDPMO - Home

www.energy.gov.bn/SitePages/Home.aspx

www.google...ogle Search Apple iCloud Facebook Twitter Wikipedia Yahoo! News Popular www.gmail.com The Prime M...lam - Home Govt Mail EDMS

جابتن تناک جابتن قردان منتری  
ENERGY DEPARTMENT  
PRIME MINISTER'S OFFICE | BRUNEI DARUSSALAM

gov.bn

Home Vacancies Tenders LBD EICF **HSSE** BNERI Contact Us About Us

Initial Incident Notification

Note to Industry

Information Sheet

Advice & Guidance

Law

Safety Case

Information Sharing

HSSE Program

MORE...

Contact Us

Oil & Gas related  
Emergency:  
+673 8715261

HSSE Enquiries:  
+673 2384488 ext:  
1112/1435/1439/1451

Email: [hsse@energy.gov.bn](mailto:hsse@energy.gov.bn)

HSSE Emergency  
Duty Phone No.  
**8715261**

**Stop and Think  
Safety & Health**

HSSE  
Energy Department  
Prime Minister's Office



Energy Department Prime Minister's Office

# THANK YOU