



Energy Department Prime Minister's Office



EDPMO

Brunei Industry Group

Engagement

Nov 2015



Safety Briefing

- **No drills planned for today**
- **The alarm is a continuous ringing of a bell**
- **In an emergency we evacuate in an orderly fashion**
- **Follow one of the ushers**
- **Assembly Point A**

SAFETY BRIEFING

Mobile phones on silent mode please



Recital of Doa Selamat

DOA SELAMAT



AGENDA

- 0830 – 0900 hours: Registration**
- 0900 – 0905 hours: Safety Briefing**
- 0905 – 0910 hours: Doa Selamat**
- 0910 – 0920 hours: Opening Remarks**
- 0920 – 0930 hours: Environmental Protection & Management Order Update (EPMO)**
- 0930 – 0945 hours: Governance & Compliance Authority (Order)**
- 0945 – 1010 hours: BIG Council**
- 1010 – 1030 hours: HSE Competence Capability Framework**
- 1030 – 1100 hours: HSE in 2016**
- 1100 – 1130 hours: Learning from Incidents**
- 1130 – 1145 hours: Incident Reporting**
- 1145 – 1200 hours: AOB**
- 1200 – 1215 hours: Q & A**
- 1215 hours: END**



AGENDA

- 0830 – 0900 hours: Registration**
- 0900 – 0905 hours: Safety Briefing**
- 0905 – 0910 hours: Doa Selamat**
- 0910 – 0920 hours: Opening Remarks**
- 0920 – 0930 hours: Environmental Protection & Management Order Update (EPMO)**
- 0930 – 0945 hours: Governance & Compliance Authority (Order)**
- 0945 – 1010 hours: BIG Council**
- 1010 – 1030 hours: HSE Competence Capability Framework**
- 1030 – 1100 hours: HSE in 2016**
- 1100 – 1130 hours: Learning from Incidents**
- 1130 – 1145 hours: Incident Reporting**
- 1145 – 1200 hours: AOB**
- 1200 – 1215 hours: Q & A**
- 1215 hours: END**



AGENDA

- 0830 – 0900 hours: Registration**
- 0900 – 0905 hours: Safety Briefing**
- 0905 – 0910 hours: Doa Selamat**
- 0910 – 0920 hours: Opening Remarks**
- 0920 – 0930 hours: Environmental Protection & Management Order Update (EPMO)**
- 0930 – 0945 hours: Governance & Compliance Authority (Order)**
- 0945 – 1010 hours: BIG Council**
- 1010 – 1030 hours: HSE Competence Capability Framework**
- 1030 – 1100 hours: HSE in 2016**
- 1100 – 1130 hours: Learning from Incidents**
- 1130 – 1145 hours: Incident Reporting**
- 1145 – 1200 hours: AOB**
- 1200 – 1215 hours: Q & A**
- 1215 hours: END**



EPMO

ENVIRONMENTAL PROTECTION & MANAGEMENT ORDER UPDATE (EPMO) 2015



Background

- **2014 Core Working Group JASTRE, AGC, EDPMO, BSJVs, TOTAL, PB and MIPR provided input**
- **Environmental Focal Points from Brunei Industry Group provided input**
- **External consultant ERM – Independent Review**
- **Working Draft provided to AGC for legal drafting**
- **Final document has been handed over to JASTRe to be gazetted**
- **EDPMO to send out a copy of the EPMO 2015 for Industry to implement (*after the meeting this week*)**
- **A few areas are covered below:**



EPMO 2015

Deals with

- **General Duty of Persons in Brunei**
- **Written notifications to the Competent Authority**
- **Appointment of Environmental Officers**
- **Regulations**

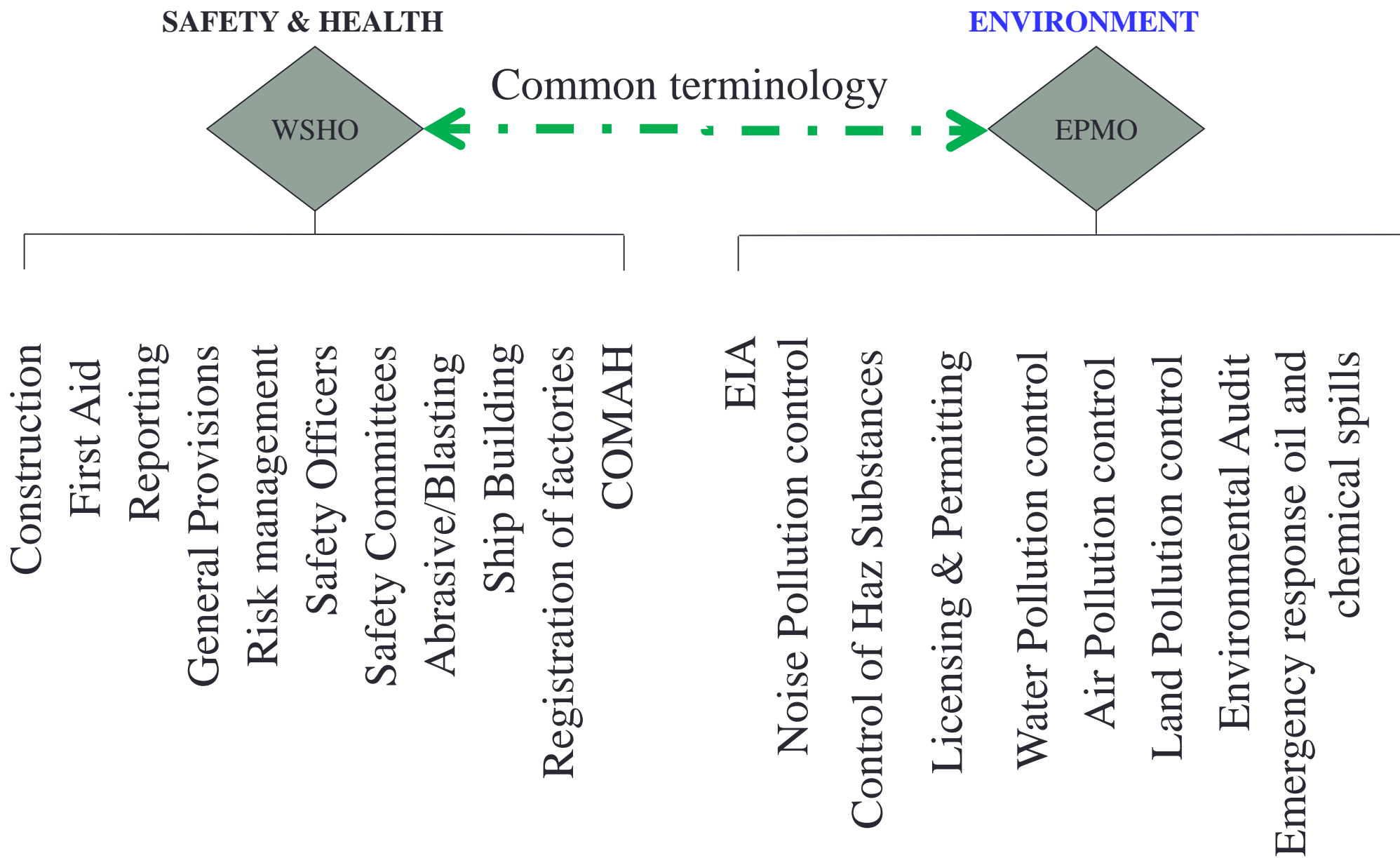
Schedules (I & II):

- **Prescribed Activities**
- **Notification of Prescribed Activities**

[LINK](#)



Safety Health & Environment Legislation





Environmental Regulations

1. Environmental Impact Assessment [to be progressed next]

-----X-----

2. Water pollution control
3. Control of hazardous substances
4. Noise pollution control
5. Air pollution control
6. Land pollution control
7. Licensing and permitting of activities
8. Emergency response for oil and chemical spills
9. Environmental Audit



Way Forward

Item	Description	Who	When
1	Draft EPMO Document to JASTRe	All members	DONE
2	Deliver legal draft to AGC	JASTRE	DONE
3	AGC to prepare EPMO legal document	AGC	DONE
4	EPMO Implementation	JASTRe	Q4 2015
5	Transition Period for Existing Premises	All members	Q4 2016

Industry to contact EDPMO HSE Team for further Awareness Sessions



AGENDA

- 0830 – 0900 hours: Registration**
- 0900 – 0905 hours: Safety Briefing**
- 0905 – 0910 hours: Doa Selamat**
- 0910 – 0920 hours: Opening Remarks**
- 0920 – 0930 hours: Environmental Protection & Management Order Update (EPMO)**
- 0930 – 0945 hours: Governance & Compliance Authority (Order)**
- 0945 – 1010 hours: BIG Council**
- 1010 – 1030 hours: HSE Competence Capability Framework**
- 1030 – 1100 hours: HSE in 2016**
- 1100 – 1130 hours: Learning from Incidents**
- 1130 – 1145 hours: Incident Reporting**
- 1145 – 1200 hours: AOB**
- 1200 – 1215 hours: Q & A**
- 1215 hours: END**



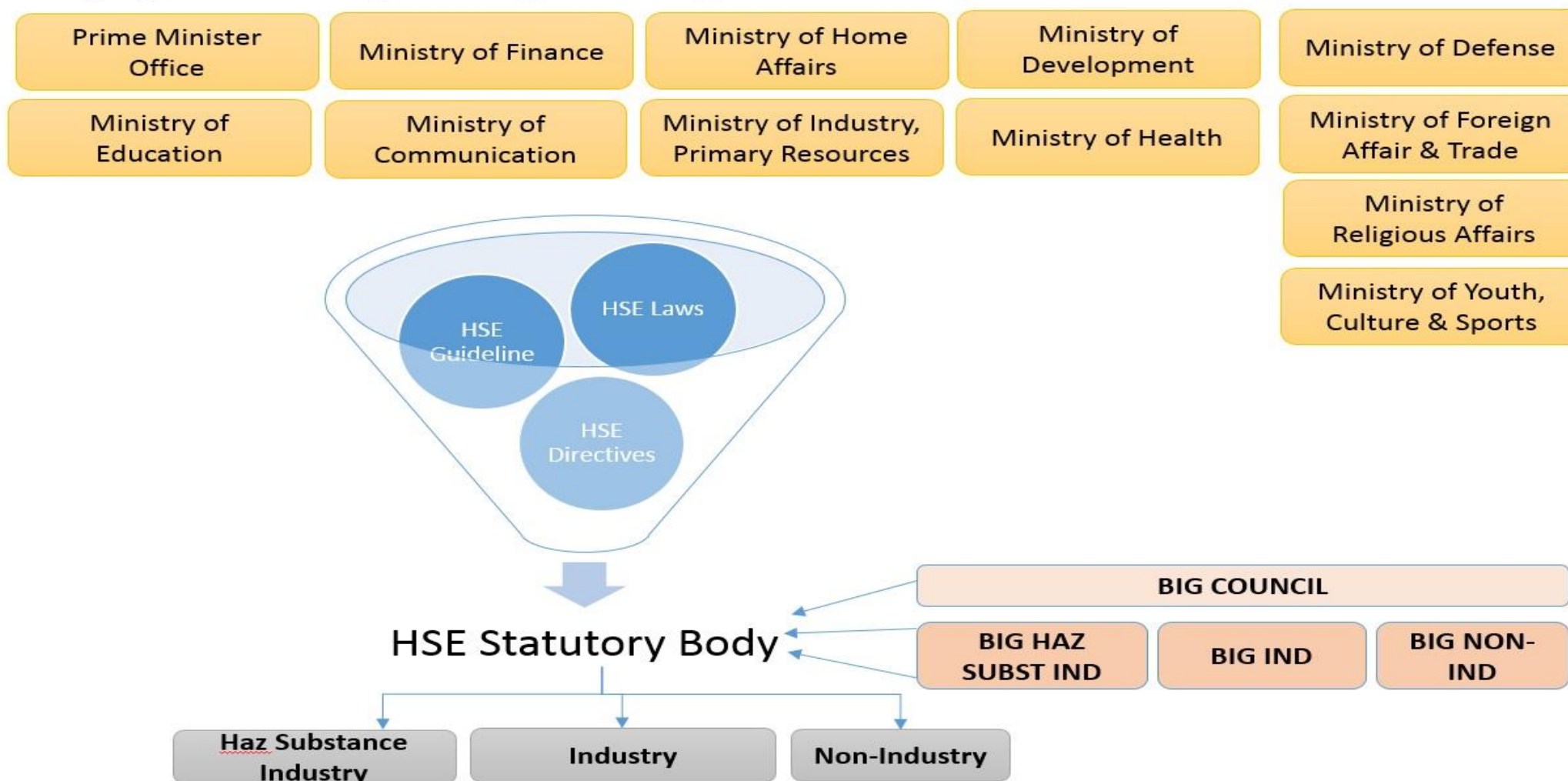
STATUTORY BODY ORDER

GOVERNANCE & COMPLIANCE AUTHORITY (ORDER)



Governance & Compliance Authority

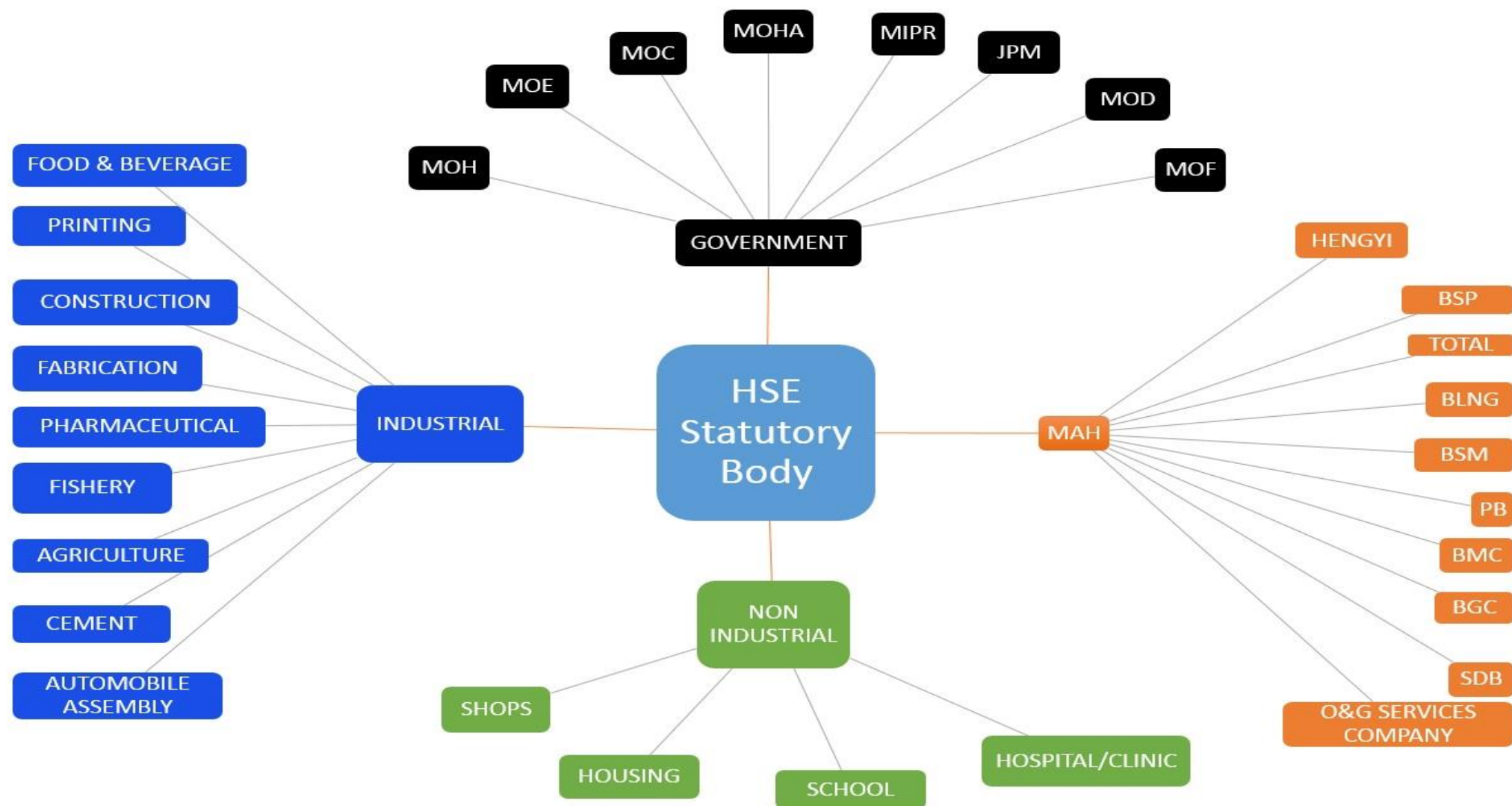
CENTRALISE HSE LEGAL COMMUNICATION





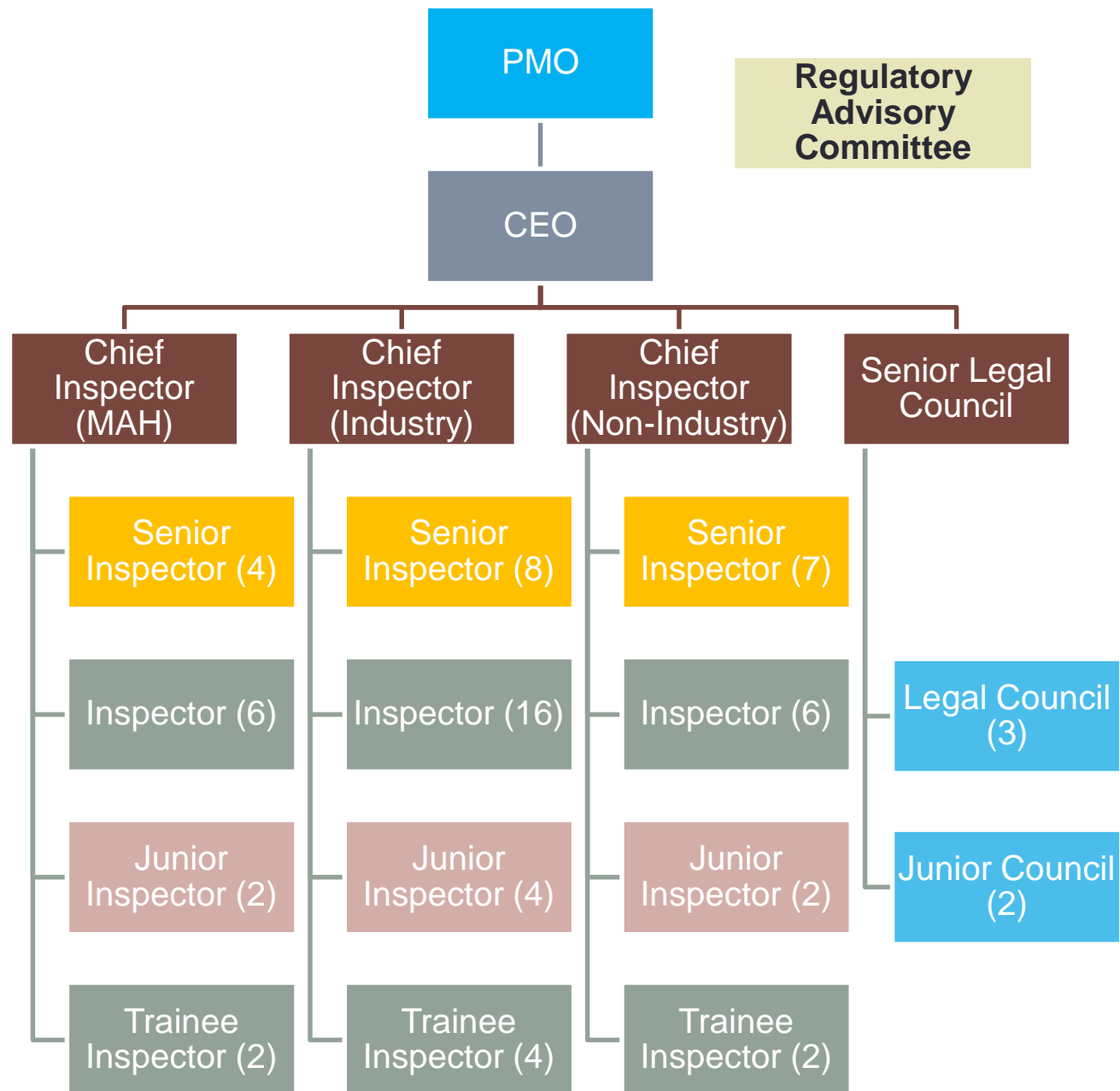
Governance & Compliance Authority

STATUTORY BODY STAKEHOLDER MAP





Governance & Compliance Authority (proposal)





AGENDA

- 0830 – 0900 hours: Registration**
- 0900 – 0905 hours: Safety Briefing**
- 0905 – 0910 hours: Doa Selamat**
- 0910 – 0920 hours: Opening Remarks**
- 0920 – 0930 hours: Environmental Protection & Management Order Update (EPMO)**
- 0930 – 0945 hours: Governance & Compliance Authority (Order)**
- 0945 – 1010 hours: **BIG Council****
- 1010 – 1030 hours: HSE Competence Capability Framework**
- 1030 – 1100 hours: HSE in 2016**
- 1100 – 1130 hours: Learning from Incidents**
- 1130 – 1145 hours: Incident Reporting**
- 1145 – 1200 hours: AOB**
- 1200 – 1215 hours: Q & A**
- 1215 hours: END**



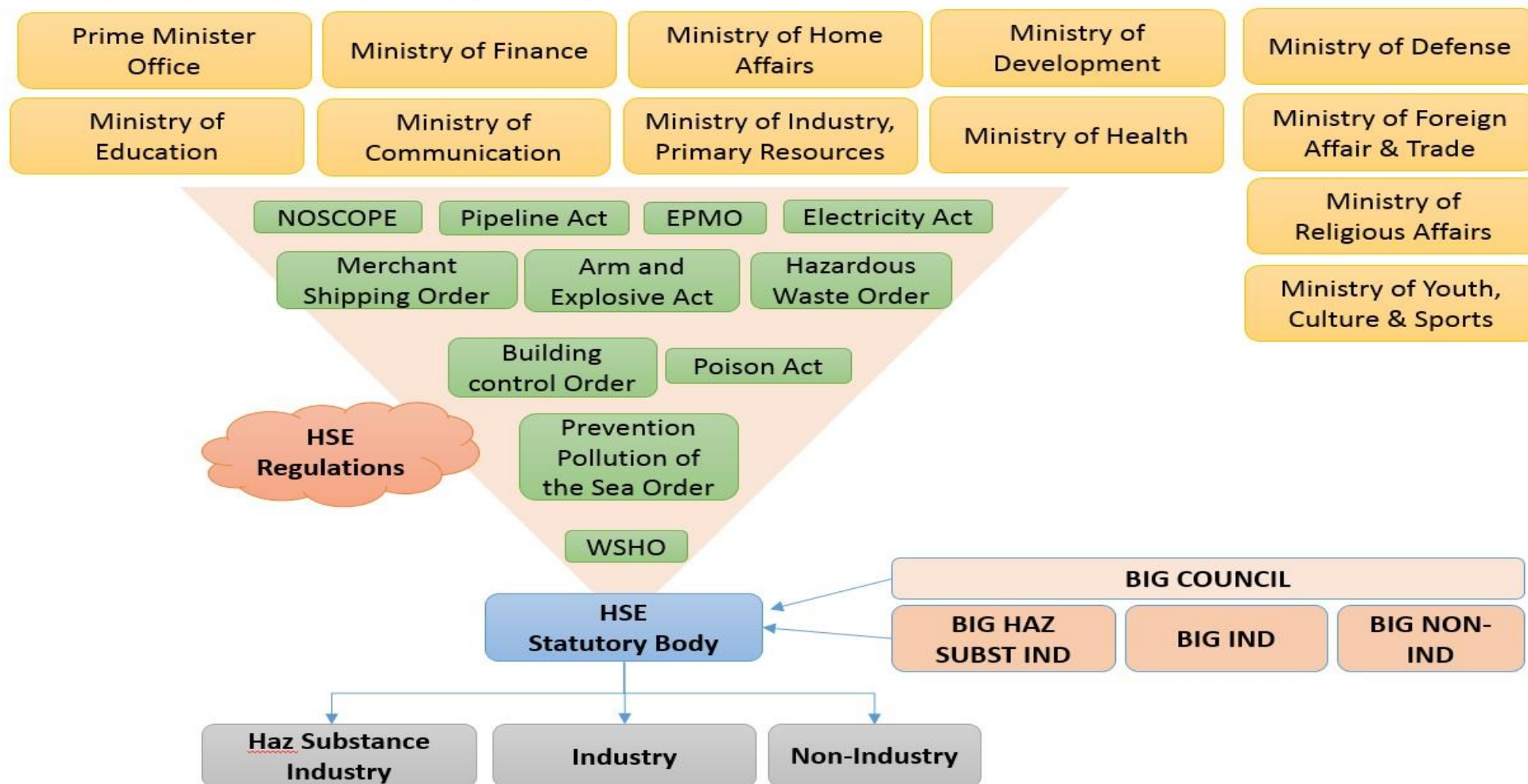
BIG COUNCIL

BRUNEI INDUSTRY GROUP COUNCIL SET UP



BIG COUNCIL

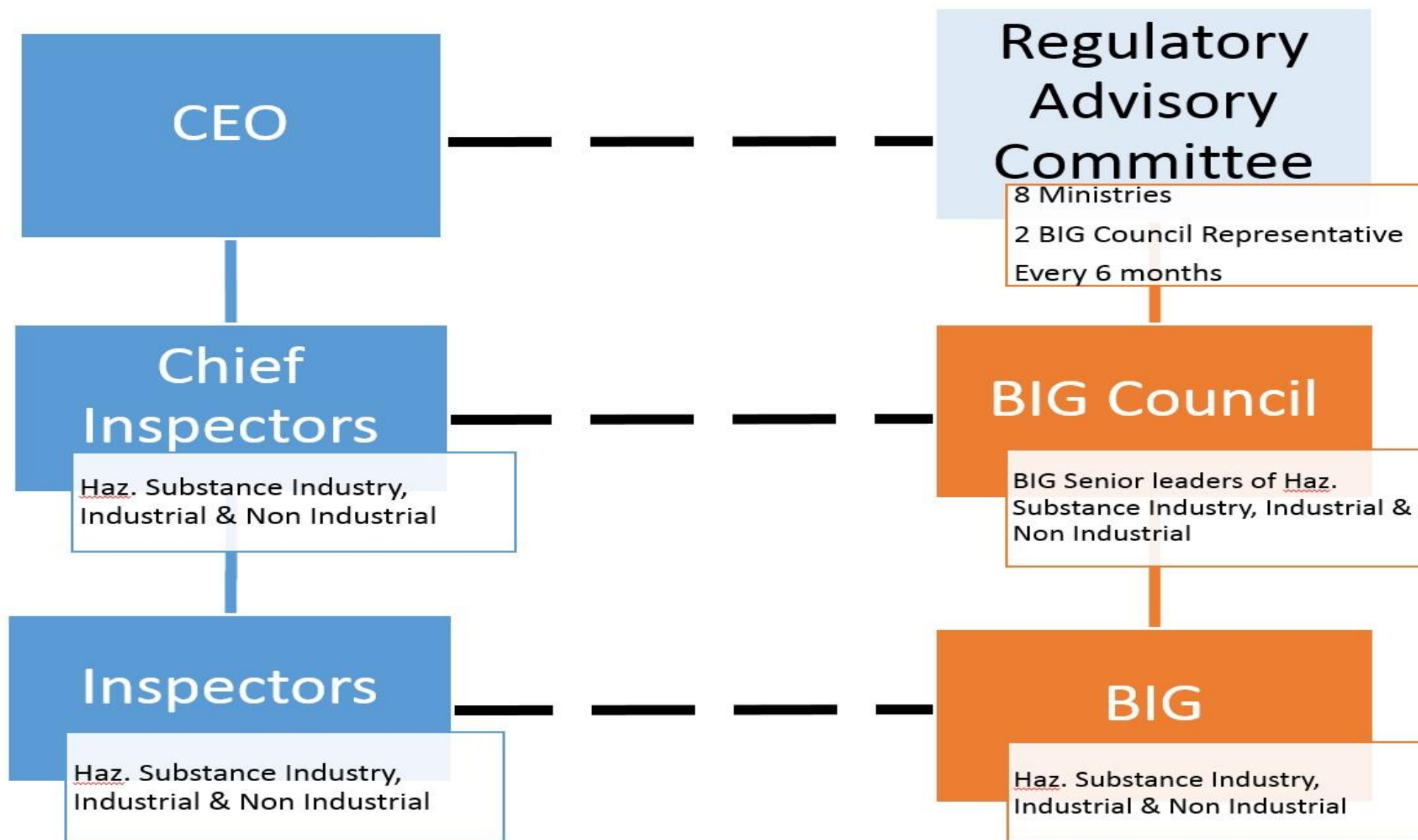
CENTRALISE HSE LEGAL COMMUNICATION





BIG COUNCIL

STATUTORY BODY LINES OF COMMUNICATION WITH INDUSTRY





BIG COUNCIL

Key Features :

- a **community of leaders** representing the Brunei industries
- providing **input** into the development and implementation of HSE related laws and regulations, policies, directives, guidelines and practices
- aim of achieving an **incident and accident free workplace**, and
- to **protect** the environment in Negara Brunei Darussalam

Members :

- senior leaders (CEO level) from Brunei Industry sectors
- HSE Regulatory Authority representation
- BIG networks representation



BIG COUNCIL

Other Features :

- Council meets **4 times per year** (every quarter)
- Elected Chair for **two year term**
- Council Membership for a maximum **four year term**
- Set up **Working Groups**

Topics being considered –

Safety Leadership

Personal Safety

Process Safety

Competence

Transport Safety

Worker's welfare

Environment and Waste Management

Emergency Response

Legislation



AGENDA

- 0830 – 0900 hours: Registration**
- 0900 – 0905 hours: Safety Briefing**
- 0905 – 0910 hours: Doa Selamat**
- 0910 – 0920 hours: Opening Remarks**
- 0920 – 0930 hours: Environmental Protection & Management Order Update (EPMO)**
- 0930 – 0945 hours: Governance & Compliance Authority (Order)**
- 0945 – 1010 hours: BIG Council**
- 1010 – 1030 hours: [HSE Competence Capability Framework](#)**
- 1030 – 1100 hours: HSE in 2016**
- 1100 – 1130 hours: Learning from Incidents**
- 1130 – 1145 hours: Incident Reporting**
- 1145 – 1200 hours: AOB**
- 1200 – 1215 hours: Q & A**
- 1215 hours: END**



HSE FRAMEWORK

HSE COMPETENCY CAPABILITY FRAMEWORK - update



HSE FRAMEWORK

- I. Professional HSE Roles identified with legal basis (WSHO 2009)**

- II. Minimum HSE Awareness Training identified**



HSE FRAMEWORK – WSH Officer

- Legal requirement in Brunei
- Initial drive will capture COMAH Facilities
- Workplaces are as identified under the WSHO Regulations 2009
- At least 1 WSH Officer per site, however requires **active** operational oversight.



HSE FRAMEWORK – WSH Officer

- Minimum HSE qualification i.e. **NEBOSH IGC**
- Minimum **two years of relevant work experience**
- **Registration** of WSH Officers

- Transitional period will apply

Regulator: *Note to Industry for minimum HSE training and WSH officer*



HSE FRAMEWORK – minimum HSE training

- Globally recognized training
 - Available in Brunei and regionally
 - Without language restrictions
 - Training course is the **IMIST** (International Minimum Industry Safety Training)
 - All Frontline Worksite Supervisors are targeted
 - COMAH facilities
 - EICF looking to incorporate the curriculum
- *Transitional period will apply***



AGENDA

- 0830 – 0900 hours: Registration**
- 0900 – 0905 hours: Safety Briefing**
- 0905 – 0910 hours: Doa Selamat**
- 0910 – 0920 hours: Opening Remarks**
- 0920 – 0930 hours: Environmental Protection & Management Order Update (EPMO)**
- 0930 – 0945 hours: Governance & Compliance Authority (Order)**
- 0945 – 1010 hours: BIG Council**
- 1010 – 1030 hours: HSE Competence Capability Framework**
- 1030 – 1100 hours: [HSE in 2016](#)**
- 1100 – 1130 hours: Learning from Incidents**
- 1130 – 1145 hours: Incident Reporting**
- 1145 – 1200 hours: AOB**
- 1200 – 1215 hours: Q & A**
- 1215 hours: END**



WAY FORWARD 2016

HEALTH, SAFETY AND ENVIRONMENT IN 2016



HSE IN 2015

ACTIVITY DESCRIPTION	STATUS COMPLETED
IIN REPORTS	40
SAFETY CASES	55
INSPECTIONS	21
NO. OF INCIDENTS INVESTIGATED/MONITORED	7
NO. OF MAJOR ACCIDENTS	1
STOP WORK ORDER	1
REMEDIAL ORDER	4

Environmental Protection & Management Order

BIG (Hazardous Substance Industry) Forums in February and November
International HSE Forum in April

Construction BIG - kicked off in October

Facilitated the development of Coastal Sensitivity Map for Brunei

Commenced – Electrical Regulations / Pipeline Regulations / COMAH

Amendments / Decommissioning & Restoration Guidelines / Statutory Body
Order



HSSE 2015 and Onwards

Energy White Paper

Ensure Safety of our people

Ensure reliability in Oil & Gas and Power Sector

Highly skilled Local staff

Integration and support

Implementation of policy and regulatory framework

Ensure safe operations

Asset integrity through compliance

HSE Team

HSSE Hd

HSE Hd

Senior Inspector

3 Senior Inspectors (Vacant)

1 Inspector (5 Vacant)

1 Junior Inspector

2 Trg Inspectors

Tools

Safety Case implementation

Facility Site Inspections

Initial Incident Notifications

Investigations

Note to Industry

Technical HSSE Advice

Legislation

Goals

Zero Major Accidents

Raising of HSE Standards

Implementation of new regulations:

Statutory Body Order

EPMO & Regulations

Pipeline Regulations

Electrical Regulations

Decommissioning & Restoration Guidelines

Workplace Safety & Health Order
2009

Control of Major Accident Hazards
2013

2012

2015

2017



HSE IN 2016 - 17

- **New Legislation:** Environmental Protection & Management Order
Statutory Body Order
Electrical Regulations
Pipeline Regulations
Environmental Impact Assessment Regulations
Approved Code of Practice – COMAH Regulations
Decommissioning & Restoration Guidelines
COMAH Regulations Amendment
- **New developments:** BIG Council
BIG Network – Construction Industry
Formation of Working Groups
WSH Officer registration
Minimum HSE Training
- **Continuation:** Safety Cases / Inspections / Incident Reporting / Forums



HSE IN 2016

INSPECTIONS

Areas to be considered –

- **Performance Standards** for People, Procedures and Equipment
- Management of **hazardous substances** onsite
- Assurance that **Safety Critical Equipment, People and Procedures** are well managed
- **Maintenance** of the Facility
- **Emergency Response** onsite and offsite. Verification of implementation and understanding
- **Compliance** to WSHO and COMAH Regulations within the workplace
- **Adverse Weather** procedures & Combined Operation **controls**



AGENDA

- 0830 – 0900 hours: Registration**
- 0900 – 0905 hours: Safety Briefing**
- 0905 – 0910 hours: Doa Selamat**
- 0910 – 0920 hours: Opening Remarks**
- 0920 – 0930 hours: Environmental Protection & Management Order Update (EPMO)**
- 0930 – 0945 hours: Governance & Compliance Authority (Order)**
- 0945 – 1010 hours: BIG Council**
- 1010 – 1030 hours: HSE Competence Capability Framework**
- 1030 – 1100 hours: HSE in 2016**
- 1100 – 1130 hours: [Learning from Incidents](#)**
- 1130 – 1145 hours: Incident Reporting**
- 1145 – 1200 hours: AOB**
- 1200 – 1215 hours: Q & A**
- 1215 hours: END**



LFI

LEARNING FROM INCIDENTS



LFI

Brunei Shell Petroleum

[LINK](#)



LFI

TOTAL

[LINK](#)



LFI

Brunei Methanol Company

[LINK](#)



AGENDA

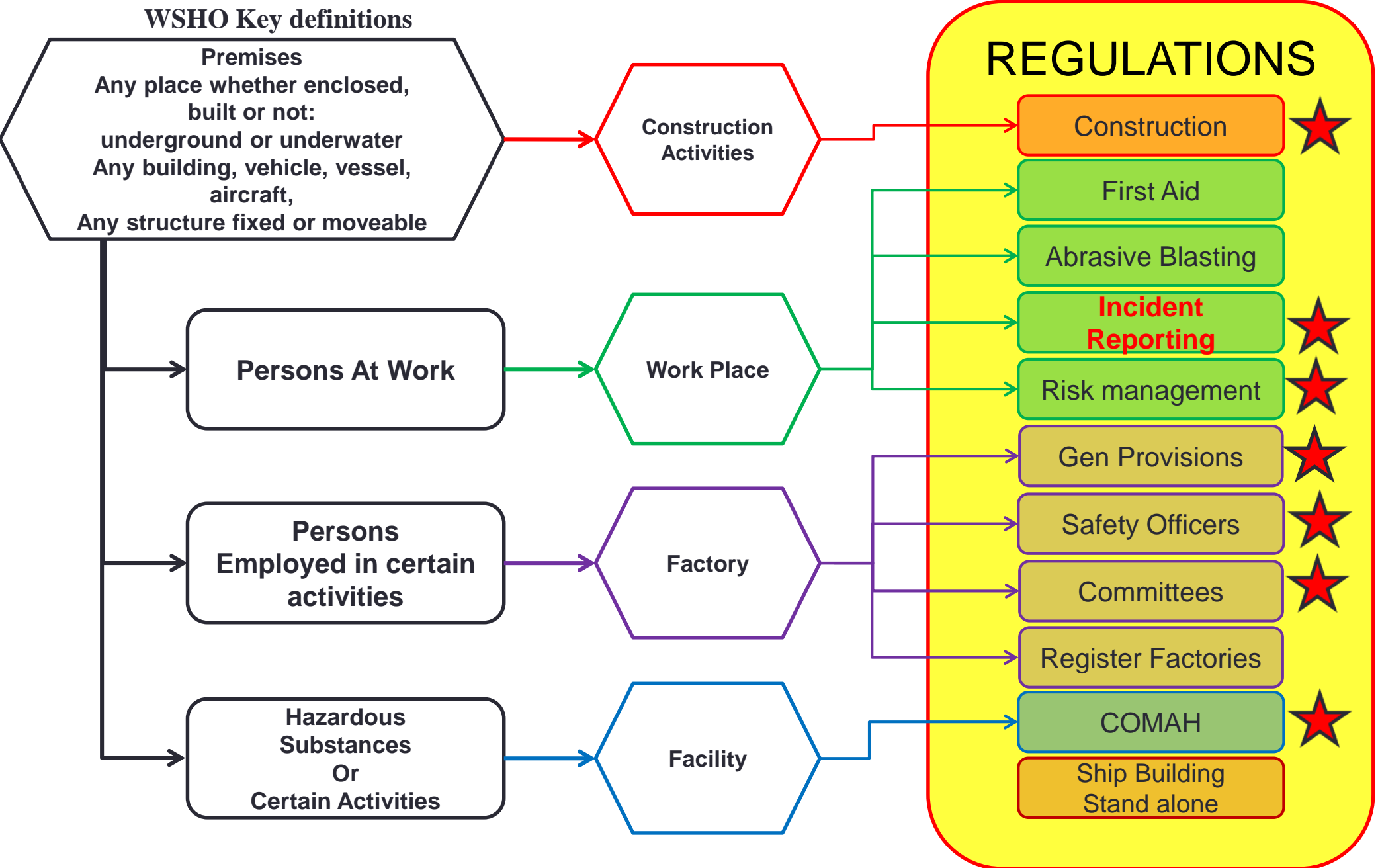
- 0830 – 0900 hours: Registration**
- 0900 – 0905 hours: Safety Briefing**
- 0905 – 0910 hours: Doa Selamat**
- 0910 – 0920 hours: Opening Remarks**
- 0920 – 0930 hours: Environmental Protection & Management Order Update (EPMO)**
- 0930 – 0945 hours: Governance & Compliance Authority (Order)**
- 0945 – 1010 hours: BIG Council**
- 1010 – 1030 hours: HSE Competence Capability Framework**
- 1030 – 1100 hours: HSE in 2016**
- 1100 – 1130 hours: Learning from Incidents**
- 1130 – 1145 hours: Incident Reporting**
- 1145 – 1200 hours: AOB**
- 1200 – 1215 hours: Q & A**
- 1215 hours: END**



Energy Department Prime Minister's Office

INCIDENT REPORTING REQUIREMENTS UNDER WSHO

How Does It All Fit Together?



Regulatory Update

2014 /NTI/ 4: Workplace Safety and Health Order Associated Regulations Announcement

- 1. Workplace Safety and Health (General Provisions) Regulations, 2014**
- 2. Workplace Safety and Health (Construction) Regulations, 2014**
- 3. Workplace Safety and Health (Workplace Safety and Health Officers) Regulations, 2014**
- 4. Workplace Safety and Health (Workplace Safety and Health Committees) Regulations, 2014**
- 5. Workplace Safety and Health (Incident Reporting) Regulations, 2014**
- 6. Workplace Safety and Health (Risk Management) Regulations, 2014**

APPLIES TO BOTH ONSHORE AND OFFSHORE WORKPLACES



WHAT TO REPORT: ADDITIONAL REPORTING REQUIREMENT

IN ADDITION TO THE INCIDENT REPORTING REGULATIONS 2014

MAJOR HAZARDS INDUSTRY TO REPORT THE FOLLOWING ADDITIONAL ITEMS

- ANY UNINTENDED **LOSS OF PRIMARY CONTAINMENT OF A HAZARDOUS SUBSTANCE.**
(SUBSTANCE AS DEFINED IN WSHO 2009 AS AMENDED 5TH SCHEDULE PART II DIVISION 2)

ANY OIL & GAS RELATED WORKPLACE IS REQUIRED TO REPORT

- TIER TWO AND ABOVE FOR ALL API PROCESS SAFETY INCIDENTS
- ANY RAM RATED ACTUAL 3 **OR POTENTIAL 4** AND ABOVE
- POTENTIAL OF MAJOR FAILURE OF SCE OR NON-COMPLIANCE WHICH COULD LEAD TO MAJOR INCIDENT OR POLLUTION

WHEN IN DOUBT REPORT



WHAT TO REPORT: CONCLUSION

TO EASE REPORTING DECISIONS ALL OIL & GAS RELATED WORKPLACES TO NOTIFY

- ANY FATALITIES
- ANY ACCIDENT REQUIRING 24 HOURS OR MORE HOSPITALISATION OR MORE THAN 3 DAYS MEDICAL SICK LEAVE
- ANY DANGEROUS OCCURANCE AS PER SCHD 2 OF WSHO
- ANY OCCUPATIONAL DISEASE AS PER SCH 3 OF WSHO

CONTACT THE EDPMO DUTY OFFICER AND USE THE IIN FORM (EDPMO HSE WEBSITE)
SUBMIT A **REPORT WITHIN 10 DAYS** OF EVENT

- ANY OTHER RAM RATED ACTUAL 3 OR POTENTIAL 4 AND ABOVE - REPORT AS SOON AS REASONABLY PRACTICABLE
- TIER TWO AND ABOVE FOR ALL API PROCESS SAFETY INCIDENTS REPORT AS SOON AS REASONABLY PRACTICABLE
- POTENTIAL OF MAJOR FAILURE OF SCE OR NON-COMPLIANCE WHICH COULD LEAD TO MAJOR INCIDENT OR POLLUTION

TO BE REPORTED



WHAT TO REPORT: COMAH

PLEASE NOTE THAT THE COMAH REGULATIONS HAVE A SEPARATE
REPORTING REQUIREMENT

**DUTY HOLDER OF A FACILITY TO REPORT ANY MAJOR ACCIDENT WITHIN 6
HOURS DIRECTLY TO EDPMO**

AGAIN PLEASE USE THE **IIN FORM** AND CONTACT THE **EDPMO DUTY OFFICER**

**IF EDPMO INTENDS TO INVESTIGATE YOU WILL BE
INFORMED**



AGENDA

- 0830 – 0900 hours: Registration**
- 0900 – 0905 hours: Safety Briefing**
- 0905 – 0910 hours: Doa Selamat**
- 0910 – 0920 hours: Opening Remarks**
- 0920 – 0930 hours: Environmental Protection & Management Order Update (EPMO)**
- 0930 – 0945 hours: Governance & Compliance Authority (Order)**
- 0945 – 1010 hours: BIG Council**
- 1010 – 1030 hours: HSE Competence Capability Framework**
- 1030 – 1100 hours: HSE in 2016**
- 1100 – 1130 hours: Learning from Incidents**
- 1130 – 1145 hours: Incident Reporting**
- 1145 – 1200 hours: [AOB](#)**
- 1200 – 1215 hours: Q & A**
- 1215 hours: END**



AOB

OTHER BUSINESS



AOB

- **Pehin Yasmin appointment as Minister of Energy and Industry**
- **Self-righting Life Jackets where there is risk of falling into the sea**
- **Emergency Response – Deep water criteria**
- **Well Notifications – COMAH Regulations Section 12**



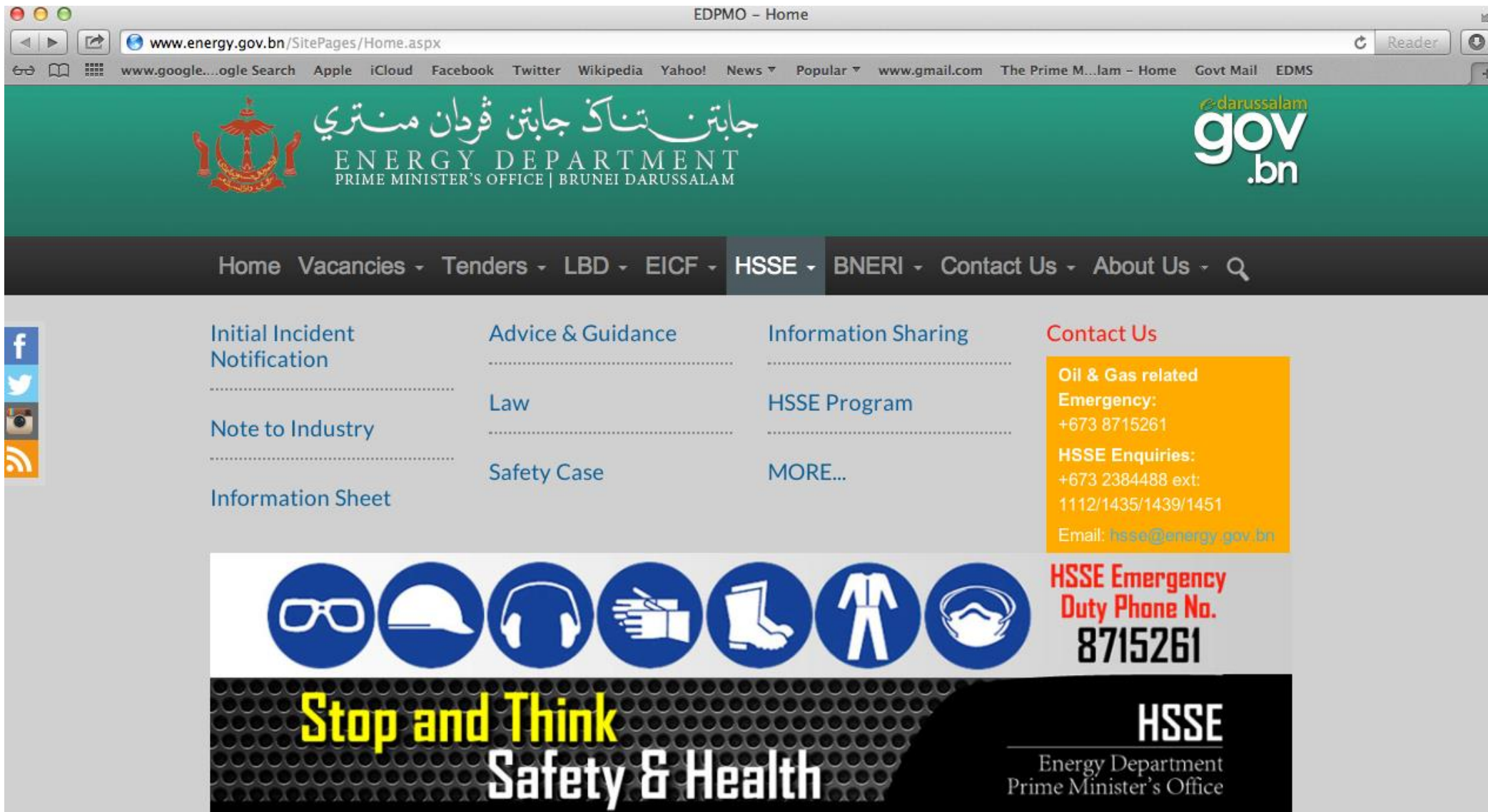
B.I.G.

Q & A

Government Resources

- Labour Department:
<http://www.labour.gov.bn>
- Attorney General's Chamber:
<http://www.agc.gov.bn/>
- Energy Department Prime Minister's Office:
<http://www.energy.gov.bn>

EDPMO Website - HSSE



The screenshot shows the EDPMO website interface. The browser address bar displays www.energy.gov.bn/SitePages/Home.aspx. The page header features the Brunei Darussalam coat of arms, the text "Jabatan Tenaga Jabatan Perdana Menteri" (Energy Department, Prime Minister's Office), and the "gov.bn" logo. A navigation menu includes links for Home, Vacancies, Tenders, LBD, EICF, HSSE, BNERI, Contact Us, and About Us. The main content area is divided into four columns: Initial Incident Notification, Advice & Guidance (with sub-links for Law and Safety Case), Information Sharing (with sub-links for HSSE Program and MORE...), and Contact Us. The Contact Us section provides emergency contact information for oil and gas related incidents, including a phone number (+673 8715261) and an email address (hsse@energy.gov.bn). A banner at the bottom features icons for safety equipment (goggles, helmet, earplugs, gloves, boots, suit, mask) and the slogan "Stop and Think Safety & Health". The HSSE logo and the Energy Department Prime Minister's Office name are also displayed.

EDPMO - Home

www.energy.gov.bn/SitePages/Home.aspx

www.google...ogle Search Apple iCloud Facebook Twitter Wikipedia Yahoo! News Popular www.gmail.com The Prime M...lam - Home Govt Mail EDMS

جابتن تناک جابتن قردان منتری
ENERGY DEPARTMENT
PRIME MINISTER'S OFFICE | BRUNEI DARUSSALAM

gov.bn

Home Vacancies Tenders LBD EICF **HSSE** BNERI Contact Us About Us

Initial Incident Notification

Advice & Guidance

Information Sharing

Contact Us

Note to Industry

Law

HSSE Program

Oil & Gas related
Emergency:
+673 8715261

Information Sheet

Safety Case

MORE...

HSSE Enquiries:
+673 2384488 ext:
1112/1435/1439/1451

Email: hsse@energy.gov.bn

HSSE Emergency
Duty Phone No.
8715261

**Stop and Think
Safety & Health**

HSSE
Energy Department
Prime Minister's Office



Energy Department Prime Minister's Office

THANK YOU



APPLICATION OF WSHO REPORTING REGULATIONS

Apply to **EVERY WORKPLACE**
(IE. A PLACE WHERE A PERSON(S) IS AT WORK)

ACCIDENT
IS AN UNINTENDED BODILY INJURY

but not

In the course of commuting to or from his workplace using a mode of transport provided by his employer

OR

As a result of his act or default while driving any vehicle on a public road in the course of his work



REPORTING AN ACCIDENT CAUSING DEATH

ACCIDENT IN
WORKPLACE INVOLVING
EMPLOYEE
LEADING TO DEATH

ACCIDENT IN
WORKPLACE INVOLVING
**ANY PERSON OR SELF
EMPLOYED**
LEADING TO DEATH

NOTIFY AS SOON AS PRACTICABLE

WITHIN **10 DAYS**
SUBMIT REPORT TO COMMISSIONER OF LABOUR

EMPLOYER

OCCUPIER OF
WORKPLACE



REPORTING AN ACCIDENT CAUSING INJURY

ACCIDENT IN WORKPLACE TO
EMPLOYEE
LEADING TO INJURY

ADMITTED TO HOSPITAL FOR AT LEAST
24 HRS

OR

RESULTS IN MORE THAN 3 DAYS SICK
LEAVE
BY REGISTERED MEDICAL
PRACTITIONER

WITHIN 10 DAYS SUBMIT REPORT TO
COMMISSIONER OF LABOUR

IF SUBSEQUENTLY DIES NOTIFY
COMMISSIONER OF LABOUR SOON AS
REASONABLY PRACTICABLE

EMPLOYER

ACCIDENT IN WORKPLACE TO
ANY PERSON OR SELF EMPLOYED
LEADING TO INJURY

ADMITTED TO HOSPITAL FOR
TREATMENT

SOON AS REASONABLY PRACTICABLE
NOTIFY COMMISSIONER OF LABOUR

OCCUPIER OF WORKPLACE



REPORTING A DANGEROUS OCCURANCE

**ANY DANGEROUS OCCURANCE AT A WORKPLACE
(SEE SCHD 2 OF WSHO)**

AS SOON AS IS REASONABLY PRACTICABLE NOTIFY THE COMMISSIONER OF LABOUR

WITHIN **10 DAYS** OF THE OCCURANCE
SUBMIT REPORT TO COMMISSIONER OF LABOUR

OCCUPIER



REPORTING AN OCCUPATIONAL DISEASE

**EMPLOYEE
SUFFERS AN OCCUPATIONAL DISEASE AT WORK
(SEE SCH 3 OF WSHO)**

REGISTERED MEDICAL PRACTITIONER PROVIDES WRITTEN STATEMENT DIAGNOSING
THE DISEASE TO THE EMPLOYER

WITHIN **10 DAYS** OF RECEIPT OF
STATEMENT SUBMIT REPORT TO
COMMISSIONER OF LABOUR

WITHIN **10 DAYS** OF DIAGNOSIS SUBMIT
REPORT TO COMMISSIONER OF LABOUR

EMPLOYER

REGISTERED MEDICAL PRACTITIONER



REPORTING REQUIREMENTS FOR OIL&GAS OPERATIONS

ANY ACCIDENT CAUSING INJURY (FATALITY): OCCUPATIONAL DISEASE
THAT OCCURS ON AN OIL & GAS RELATED WORKPLACE

ONLY INVOLVING
CLIENT EMPLOYEE

ONLY INVOLVING
CONTRACTING EMPLOYEE

NOTIFIED (AND OR REPORTED) BY

CLIENT

CONTRACTOR



REPORTING REQUIREMENTS FOR OIL&GAS OPERATIONS

ANY ACCIDENT CAUSING INJURY (FATALITY): OCCUPATIONAL DISEASE
THAT OCCURS ON A OIL & GAS RELATED WORKPLACE

INVOLVING
CLIENT EMPLOYEE
AND INVOLVING
CONTRACTING EMPLOYEE

NOTIFIED (AND OR REPORTED) BY

CLIENT



REPORTING REQUIREMENTS FOR OIL&GAS OPERATIONS

**ANY DANGEROUS OCCURANCE AT A WORKPLACE
(SEE SCHD 2 OF WSHO)**

AS SOON AS IS REASONABLY PRACTICABLE NOTIFY THE COMMISSIONER OF LABOUR

**WITHIN 10 DAYS OF THE OCCURANCE SUBMIT REPORT TO COMMISSIONER OF
LABOUR**

OCCUPIER



HOW TO REPORT A PRAGMATIC WAY TO MEET THE LEGAL REQUIREMENTS

ANY ACCIDENT CAUSING INJURY (FATALITY): OCCUPATIONAL DISEASE OR
DANGEROUS OCCURANCE
THAT OCCURS ON A OIL & GAS RELATED WORKPLACE

CALL THE EDPMO DUTY OFFICER AND USE THE INITIAL INCIDENT
NOTIFICATION FORM [IIN](#) AVAILABLE ON THE EDPMO WEBSITE

THE IIN FORM IS AUTOMATICALLY FORWARDED TO
EDPMO
LABOUR DEPT
ENVIRONMENTAL DEPT
HEALTH DEPT
MARINE DEPARTMENT
WHEN YOU PRESS THE SUBMIT BUTTON

BY USING THE IIN FORM YOU AUTOMATICALLY COMPLY WITH THE REPORTING
REGULATIONS IN NOTIFYING THE COMMISSIONER OF LABOUR



WHAT TO REPORT

ANY ACCIDENT (AN UNINTENDED BODILY INJURY)

but not

In the course of commuting to or from his workplace using a mode of transport provided by his employer

OR

As a result of his act or default while driving any vehicle on a public road in the course of his work

DANGEROUS OCCURANCE

AS PER SECOND SCHEDULE OF THE WSHO

OCCUPATIONAL DISEASE

AS PER THIRD SCHEDULE OF THE WSHO