



Energy & Industry Department  
Prime Minister's Office



# **EIDPMO**

## **Brunei Industry Group – General Industry Engagement**

**Aug 2016**



# Safety Briefing

- **No drills planned for today**
- **The alarm is a continuous ringing of a bell**
- **In an emergency we evacuate in an orderly fashion**
- **Follow one of the ushers**
- **Assembly Point A**

**SAFETY BRIEFING**

**Mobile phones on silent mode please**



## **Recital of Doa Selamat**

# **DOA SELAMAT**



## AGENDA

- 0900 – 0930 hours: Registration**
- 0930 – 0935 hours: Safety Briefing**
- 0935 – 0940 hours: Doa Selamat**
- 0940 – 0950 hours: Opening Remarks**
- 0950 – 1000 hours: Electricity Order & Regulations Update**
- 1000 – 1015 hours: National Standards Centre**
- 1015 – 1030 hours: Governance & Compliance Authority**
- 1030 – 1045 hours: HSE Competence Capability Framework**
- 1045 – 1100 hours: Labour Department Presentation**
- 1100 – 1115 hours: Way Forward – Legislative Update**
- 1115 – 1145 hours: Q & A**
- 1145 hours: END**



## AGENDA

- 0900 – 0930 hours: Registration**
- 0930 – 0935 hours: Safety Briefing**
- 0935 – 0940 hours: Doa Selamat**
- 0940 – 0950 hours: Opening Remarks**
- 0950 – 1000 hours: Electricity Order & Regulations Update**
- 1000 – 1015 hours: National Standards Centre**
- 1015 – 1030 hours: Governance & Compliance Authority**
- 1030 – 1045 hours: HSE Competence Capability Framework**
- 1045 – 1100 hours: Labour Department Presentation**
- 1100 – 1115 hours: Way Forward – Legislative Update**
- 1115 – 1145 hours: Q & A**
- 1145 hours: END**



# OPENING REMARKS



# INTRODUCTIONS

## HSE Team



## AGENDA

- 0900 – 0930 hours: Registration**
- 0930 – 0935 hours: Safety Briefing**
- 0935 – 0940 hours: Doa Selamat**
- 0940 – 0950 hours: Opening Remarks**
- 0950 – 1000 hours: Electricity Order & Regulations Update**
- 1000 – 1015 hours: National Standards Centre**
- 1015 – 1030 hours: Governance & Compliance Authority**
- 1030 – 1045 hours: HSE Competence Capability Framework**
- 1045 – 1100 hours: Labour Department Presentation**
- 1100 – 1115 hours: Way Forward – Legislative Update**
- 1115 – 1145 hours: Q & A**
- 1145 hours: END**





## REGULATORY AWARENESS

# ELECTRICITY ORDER & REGULATIONS UPDATE

[LINK](#)



## AGENDA

- 0900 – 0930 hours: Registration**
- 0930 – 0935 hours: Safety Briefing**
- 0935 – 0940 hours: Doa Selamat**
- 0940 – 0950 hours: Opening Remarks**
- 0950 – 1000 hours: Electricity Order & Regulations Update**
- 1000 – 1015 hours: [National Standards Centre](#)**
- 1015 – 1030 hours: Governance & Compliance Authority**
- 1030 – 1045 hours: HSE Competence Capability Framework**
- 1045 – 1100 hours: Labour Department Presentation**
- 1100 – 1115 hours: Way Forward – Legislative Update**
- 1115 – 1145 hours: Q & A**
- 1145 hours: END**



NSC

# NATIONAL STANDARDS CENTRE

[LINK](#)



## AGENDA

- 0900 – 0930 hours: Registration**
- 0930 – 0935 hours: Safety Briefing**
- 0935 – 0940 hours: Doa Selamat**
- 0940 – 0950 hours: Opening Remarks**
- 0950 – 1000 hours: Electricity Order & Regulations Update**
- 1000 – 1015 hours: National Standards Centre**
- 1015 – 1030 hours: Governance & Compliance Authority**
- 1030 – 1045 hours: HSE Competence Capability Framework**
- 1045 – 1100 hours: Labour Department Presentation**
- 1100 – 1115 hours: Way Forward – Legislative Update**
- 1115 – 1145 hours: Q & A**
- 1145 hours: END**



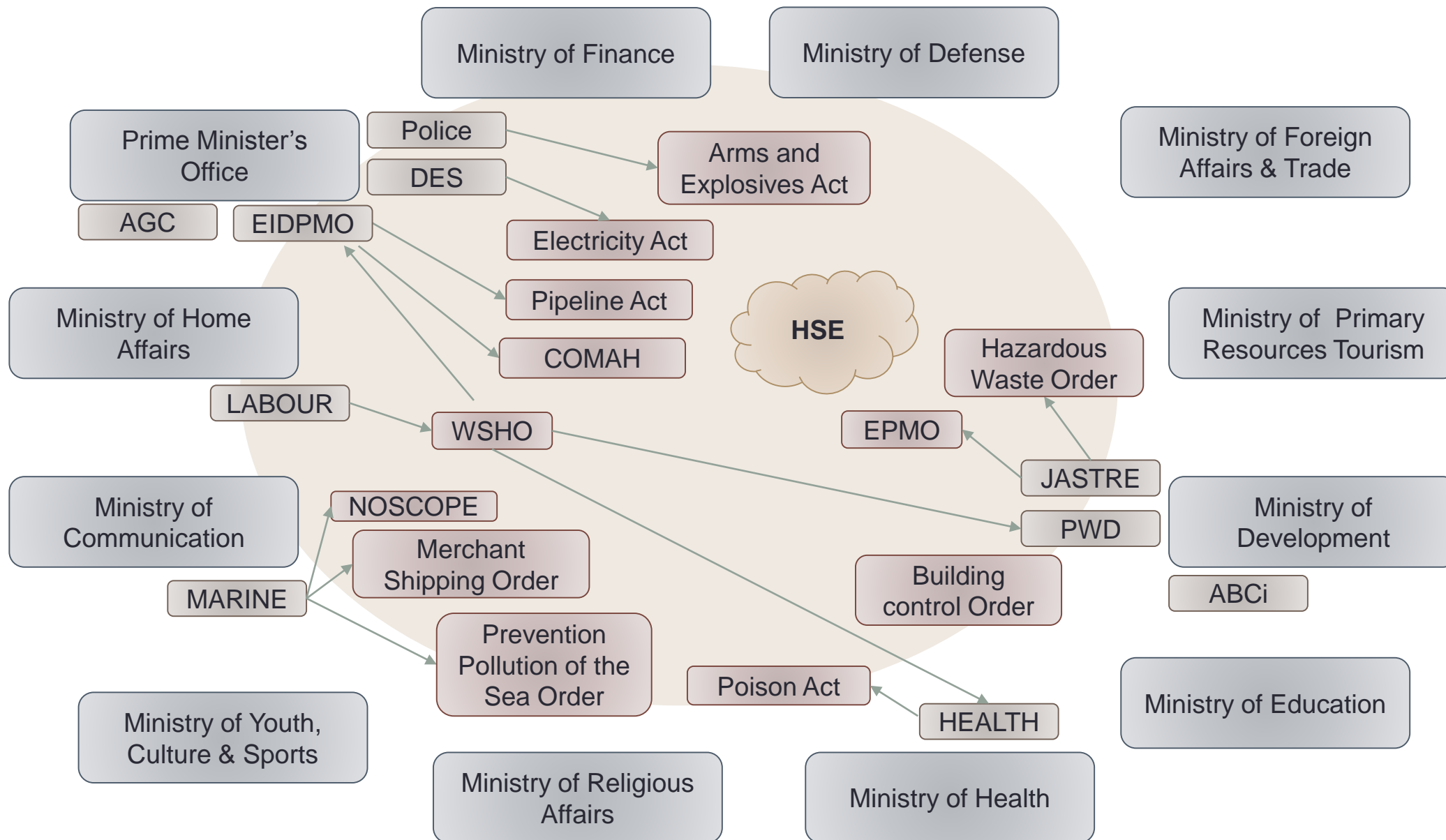
## **STATUTORY BODY**

# **GOVERNANCE & COMPLIANCE AUTHORITY**



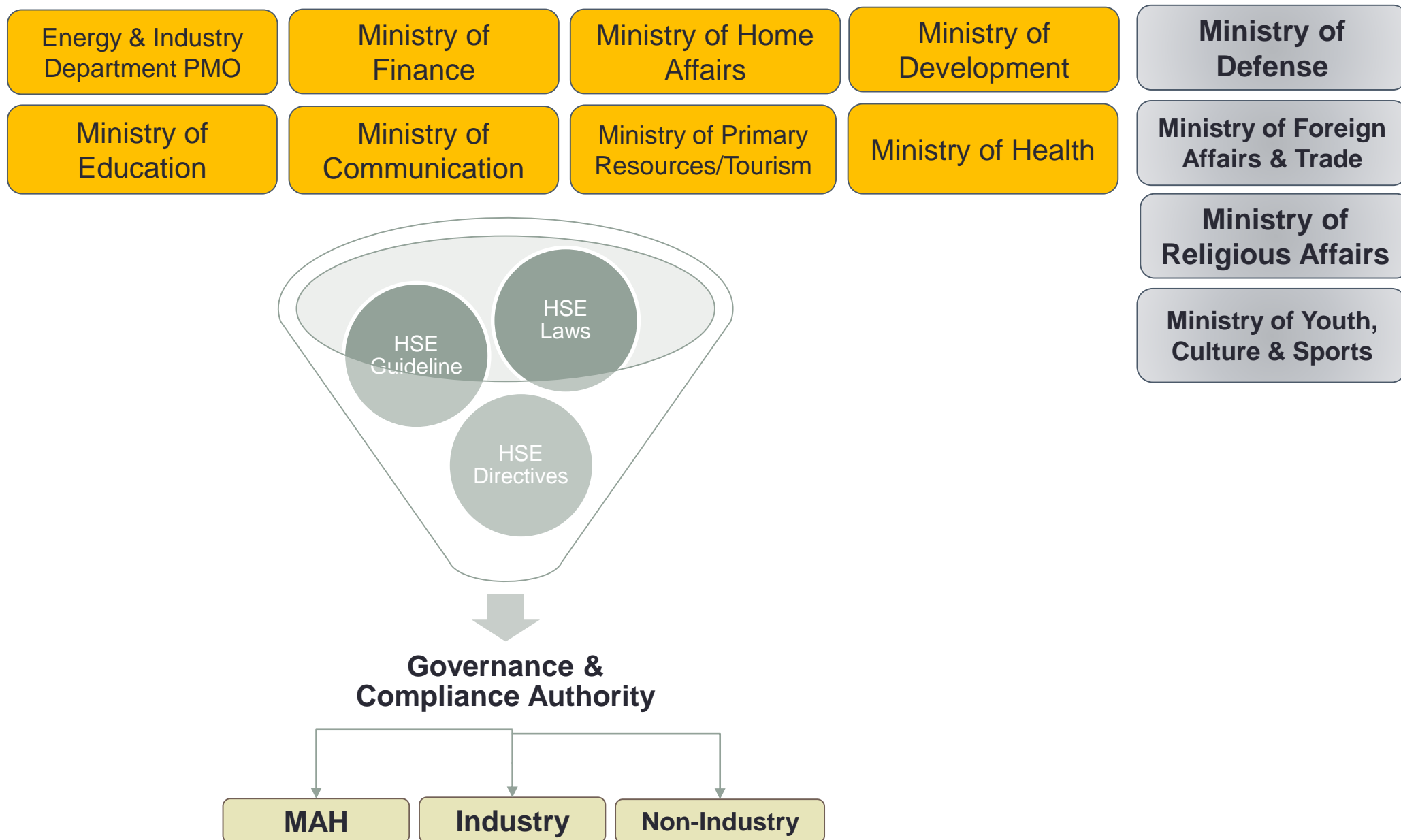
# STATUTORY BODY DEVELOPMENT

## INTER-MINISTRIES' PRESENT HSE LEGAL COMMUNICATION



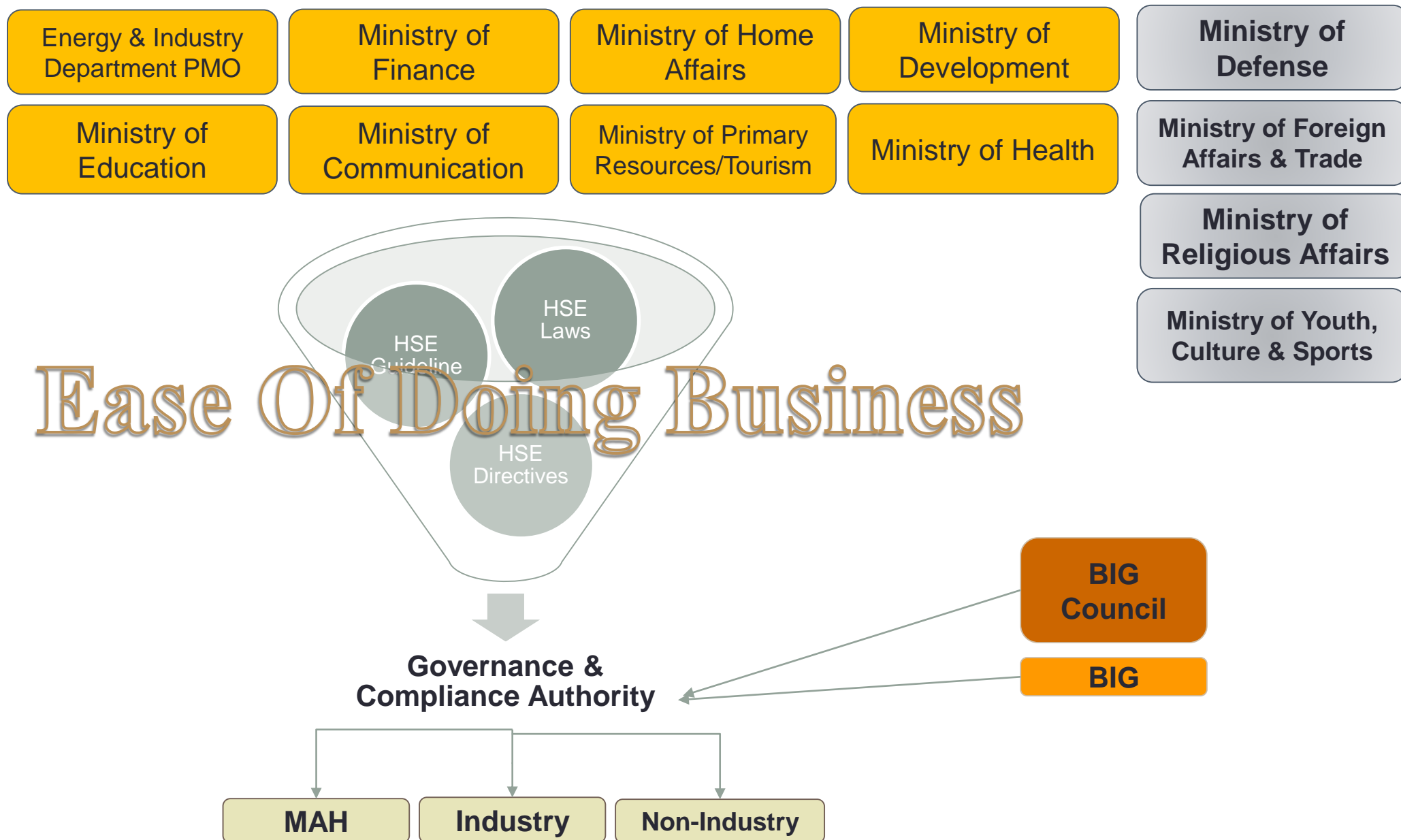


## PROPOSED LEGAL STRUCTURE





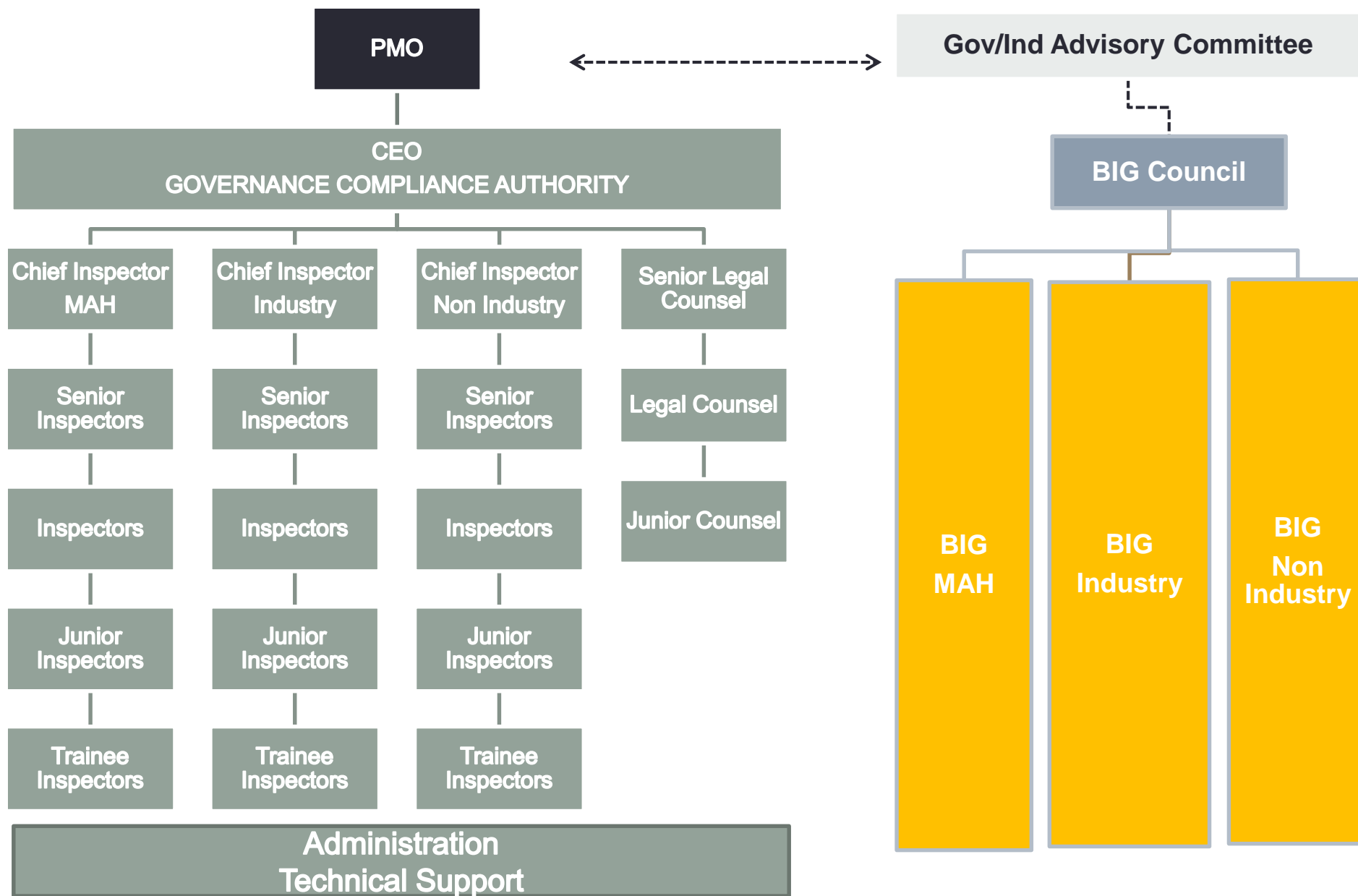
## PROPOSED LEGAL STRUCTURE





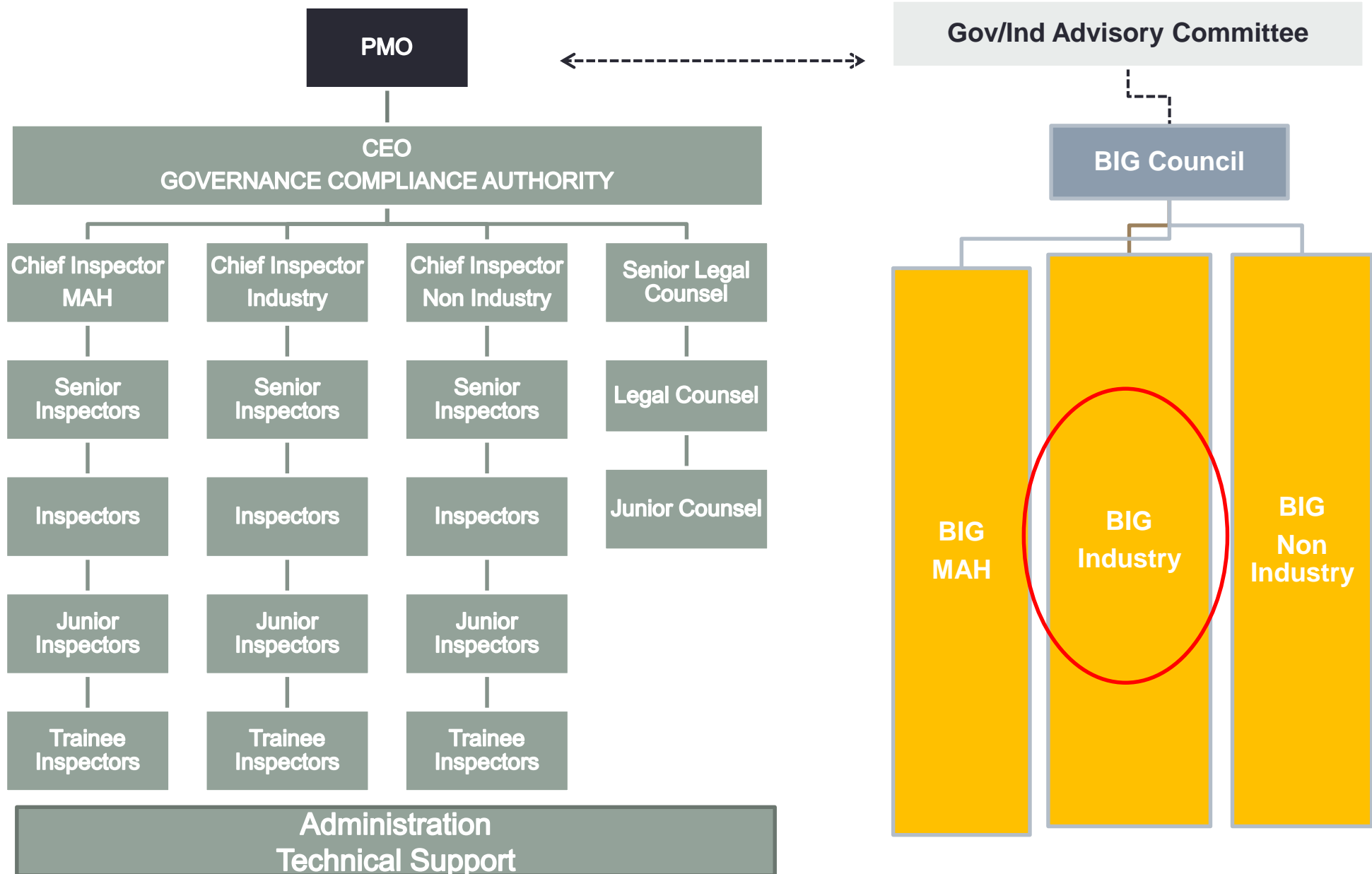


# STATUTORY BODY INTERFACE WITH INDUSTRY



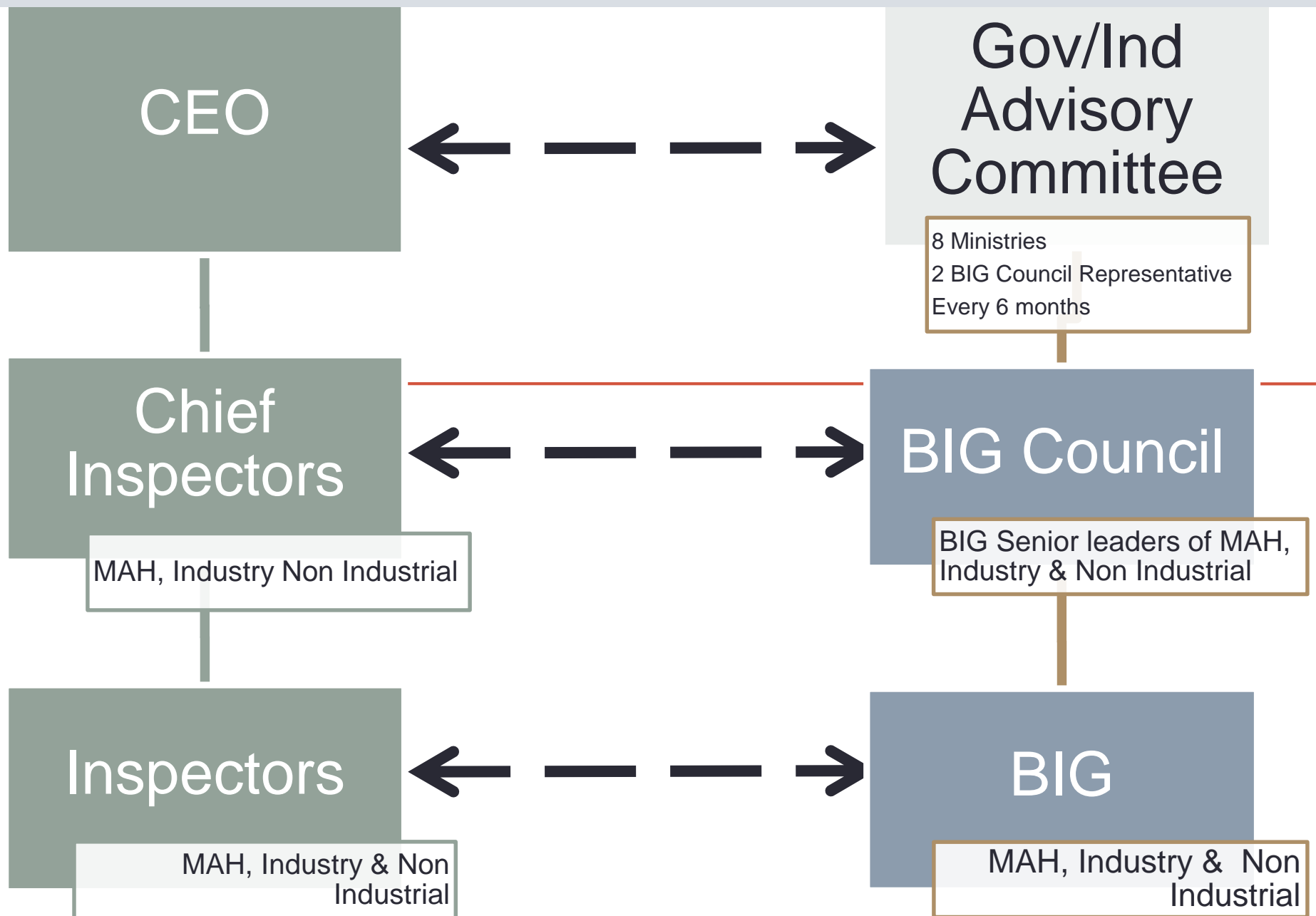


# STATUTORY BODY INTERFACE WITH INDUSTRY



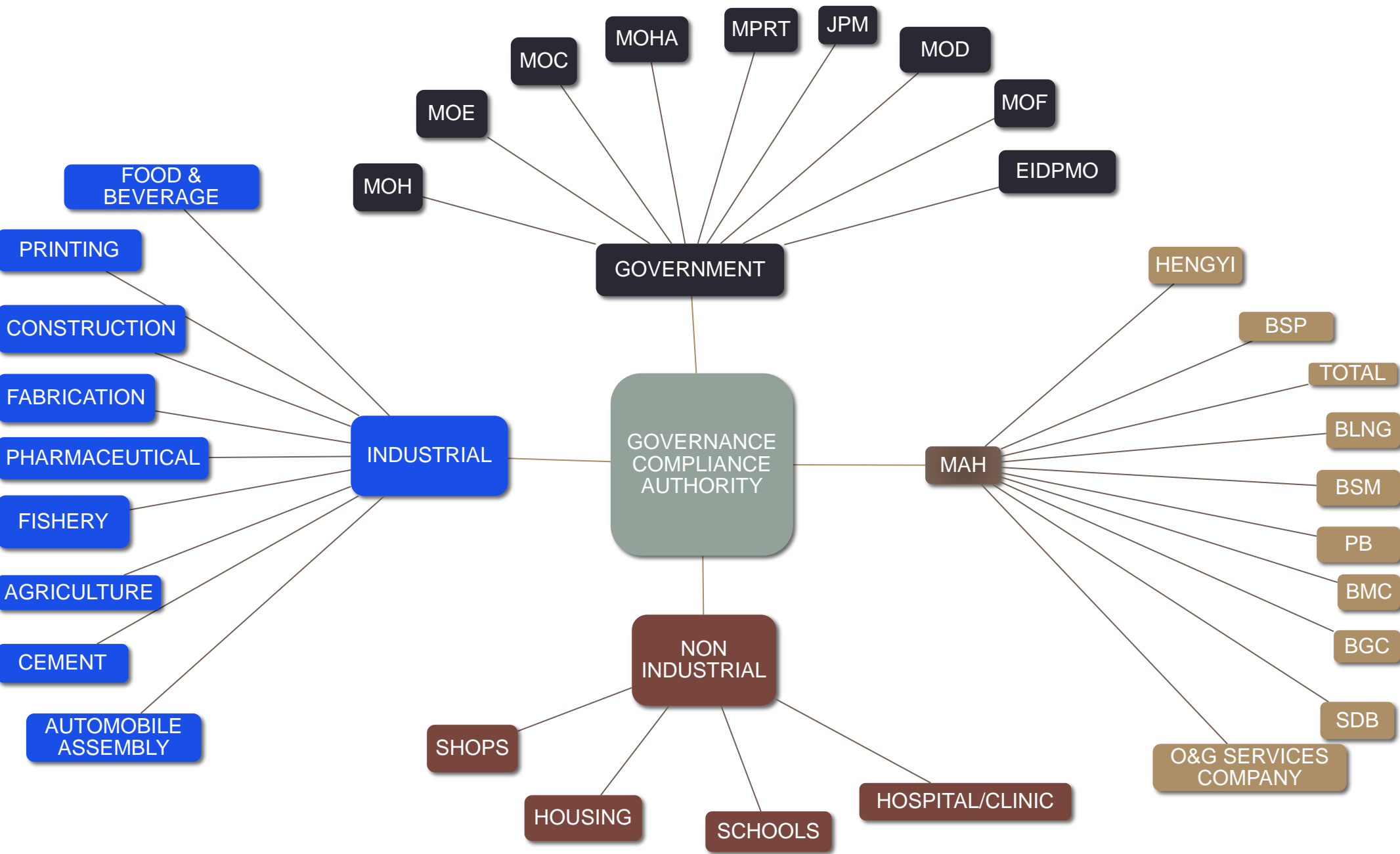


## GCA LINES OF COMMUNICATION WITH INDUSTRY





# GCA STAKEHOLDER MAP





## REGULATORY ROAD MAP

- Statutory Body Order is ready and with AGC for drafting
- Ministerial Meetings completed.
- Formal approval given **20th August 2016** for full implementation.
- Governance and Compliance Authority target to be in place by **Q1 2017** – phased approach over two years enforcement of Health, Safety and Environmental Legislation in Brunei
- Ongoing discussions with stake holders.

E.g. *Industry Groups*

*Trans-Pacific Partnership Agreement Team*

*ASEAN Decommissioning and Restoration team*

*Training providers developing minimum training standards*



## OVERALL SUMMARY

- ✓ **THE GCA ACTING AS A SINGLE POINT OF CONTACT OUTSIDE THE GOVERNMENT FRAMEWORK AND REPORTING TO PMO**
- ✓ **ROLE TO PROVIDE ONE STOP SHOP TO INDUSTRY FOR ALL HSE ENFORCEMENT AND REGULATION ACTIVITIES, ENHANCING EASE OF DOING BUSINESS IN BRUNEI**
- ✓ **POTENTIAL TO BRING IN APPROVAL/LICENSING DEPARTMENTS WITHIN THE GCA IN THE FUTURE**
- ✓ **SELF FUNDING THROUGH A CHARGING REGIME.**
- ✓ **INHERENT TRAINING AND DEVELOPMENT BUILT IN TO THE FRAMEWORK FOR LOCAL BRUNEIAN STAFF. CLEAR PROGRESSION AND CAREER PATH**
- ✓ **POTENTIAL TO DEVELOP INTO A REGIONAL CENTER OF EXCELLENCE**
- ✓ **SETS BRUNEI UP FOR HSE SUCCESS WHILST ACHIEVING DIVERSIFICATION AND SELF SUFFIENCY ON THE NATION'S JOURNEY TOWARDS WAWASAN 2035.**



## AGENDA

- 0900 – 0930 hours: Registration**
- 0930 – 0935 hours: Safety Briefing**
- 0935 – 0940 hours: Doa Selamat**
- 0940 – 0950 hours: Opening Remarks**
- 0950 – 1000 hours: Electricity Order & Regulations Update**
- 1000 – 1015 hours: National Standards Centre**
- 1015 – 1030 hours: Governance & Compliance Authority**
- 1030 – 1045 hours: [HSE Competence Capability Framework](#)**
- 1045 – 1100 hours: Labour Department Presentation**
- 1100 – 1115 hours: Way Forward – Legislative Update**
- 1115 – 1145 hours: Q & A**
- 1145 hours: END**



## **HSE COMPETENCE CAPABILITY FRAMEWORK**

# **HSE COMPETENCE CAPABILITY FRAMEWORK FOR BRUNEI**



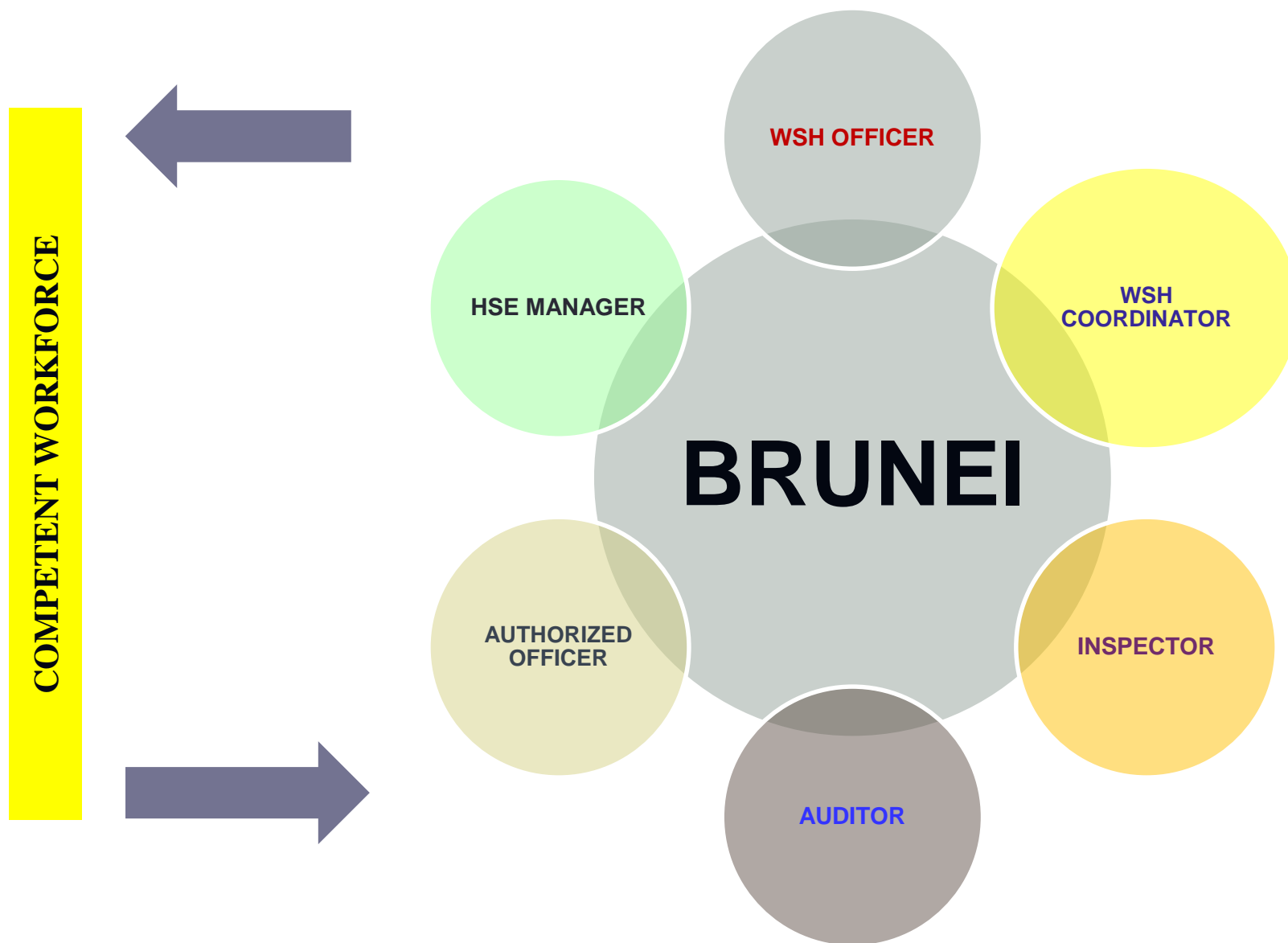


## **HSE FRAMEWORK**

- I. Professional HSE Roles identified with legal basis (Workplace Safety Health Order 2009)**
- II. Minimum HSE Awareness Training identified (basic training for all workers)**

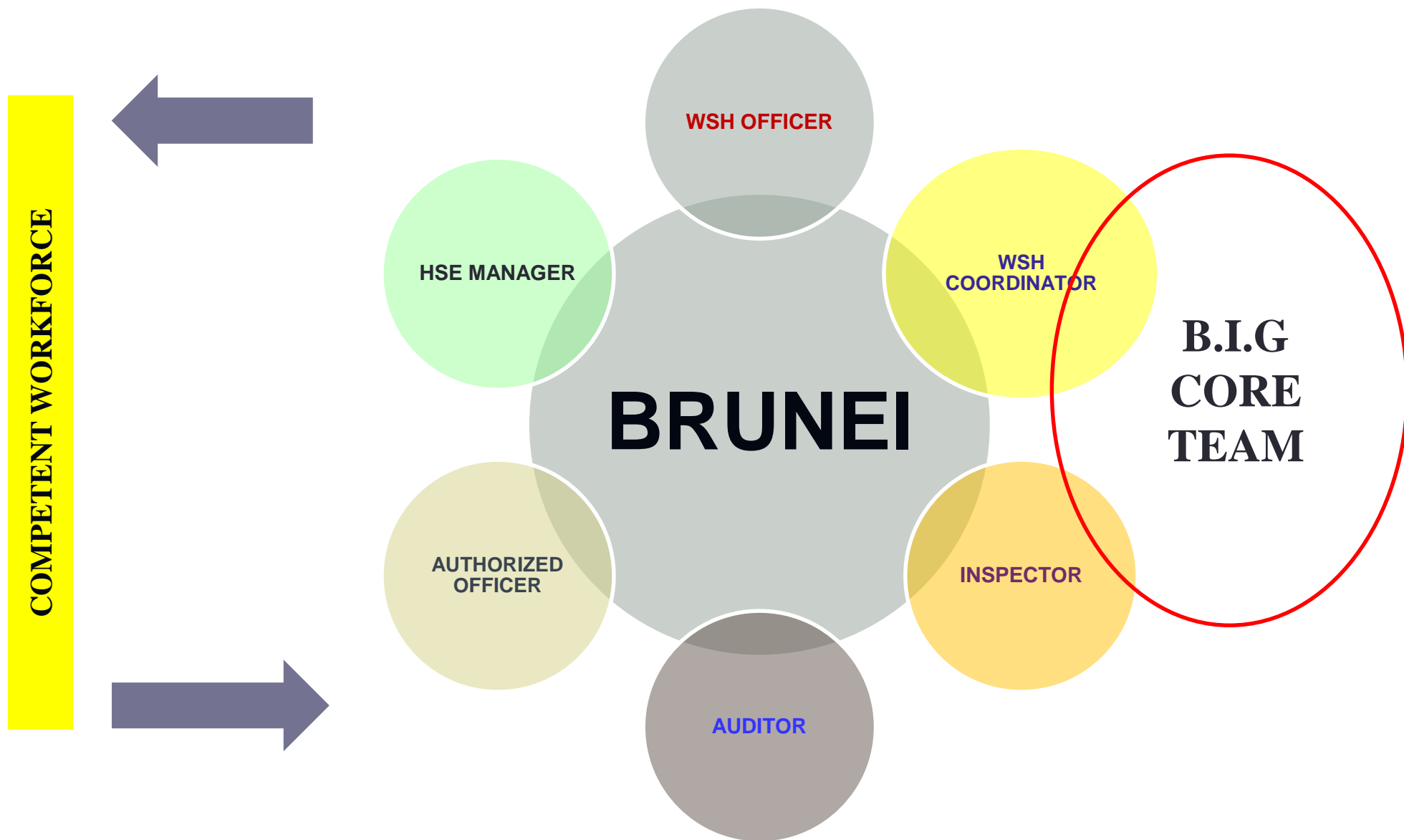


# HSE FRAMEWORK





# HSE FRAMEWORK





## HSE FRAMEWORK

### I. Workplace Safety and Health Officer (as per WSHO 2009)

- Qualification NEBOSH IGC
- Minimum 2 years relevant work experience
- Registration for **COMAH facilities** with EIDPMO
- Letter of Recognition
- In role, qualified with active oversight 30<sup>th</sup> Jan 2017

➤ **Labour Directive**

➤ **Note to Industry 04/2016 by EIDPMO**



## HSE FRAMEWORK

### II. Minimum HSE Awareness Training

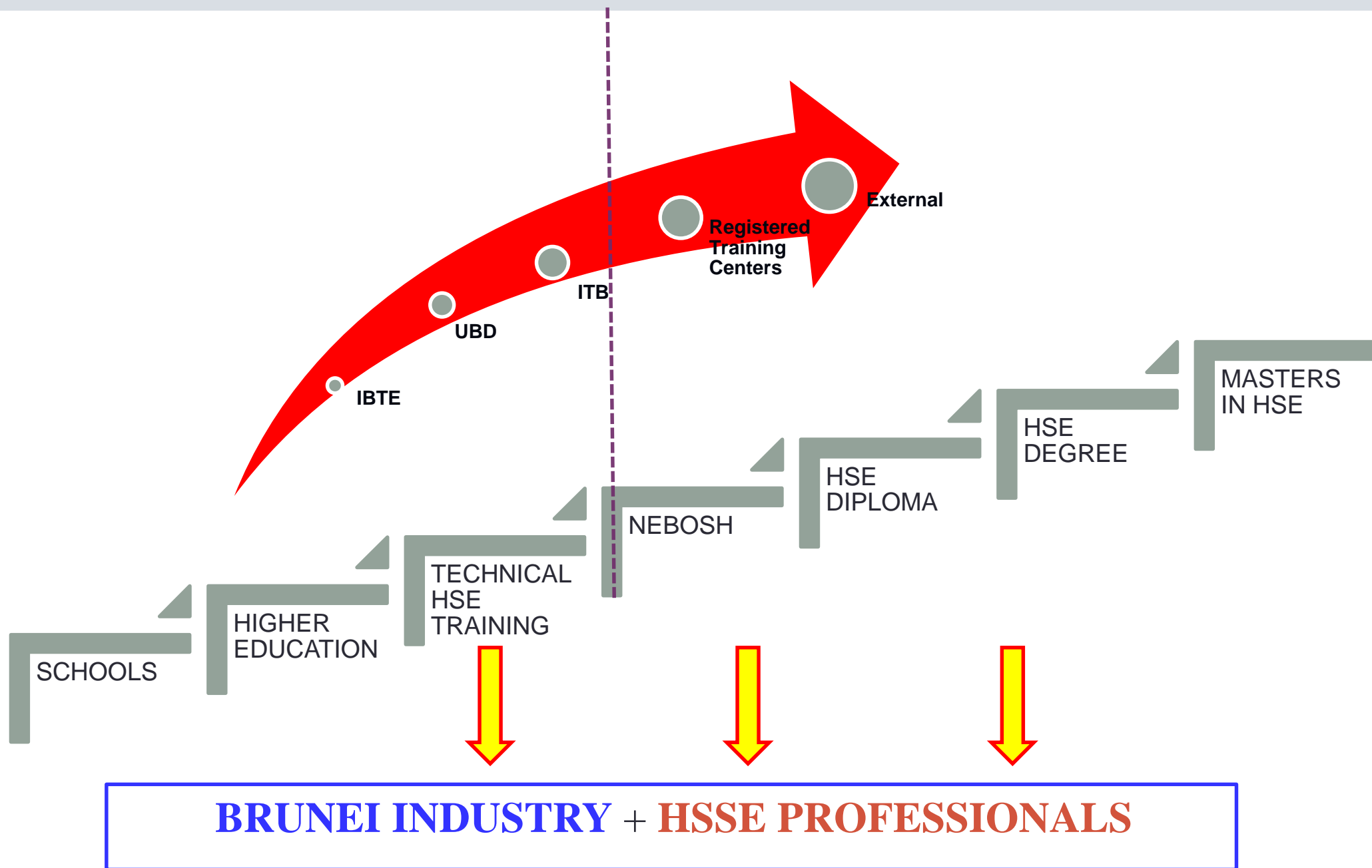
- International Minimum Industry Safety Training (IMIST)
- Frontline Supervisors in **COMAH** facilities
- 50% by end June 2017
- 100% by end November 2017

**Minimum HSE Awareness Training - Other Industry sectors *plan***

**“Front line Supervisor” means the most senior person based predominately at the work site, who has been given the authority to manage a group of workers in the execution of a given work scope, and who is responsible for ensuring that all the HS&E requirements pertaining to that work scope are fully understood and implemented.**



# HSE FRAMEWORK





## AGENDA

- 0900 – 0930 hours: Registration**
- 0930 – 0935 hours: Safety Briefing**
- 0935 – 0940 hours: Doa Selamat**
- 0940 – 0950 hours: Opening Remarks**
- 0950 – 1000 hours: Electricity Order & Regulations Update**
- 1000 – 1015 hours: National Standards Centre**
- 1015 – 1030 hours: Governance & Compliance Authority**
- 1030 – 1045 hours: HSE Competence Capability Framework**
- 1045 – 1100 hours: [Labour Department Presentation](#)**
- 1100 – 1115 hours: Way Forward – Legislative Update**
- 1115 – 1145 hours: Q & A**
- 1145 hours: END**



## LABOUR DEPARTMENT

# LABOUR DEPARTMENT

[LINK](#)





## AGENDA

- 0900 – 0930 hours: Registration**
- 0930 – 0935 hours: Safety Briefing**
- 0935 – 0940 hours: Doa Selamat**
- 0940 – 0950 hours: Opening Remarks**
- 0950 – 1000 hours: Electricity Order & Regulations Update**
- 1000 – 1015 hours: National Standards Centre**
- 1015 – 1030 hours: Governance & Compliance Authority**
- 1030 – 1045 hours: HSE Competence Capability Framework**
- 1045 – 1100 hours: Labour Department Presentation**
- 1100 – 1115 hours: [Way Forward – Legislative Update](#)**
- 1115 – 1145 hours: Q & A**
- 1145 hours: END**



## **HSE 2016 & BEYOND**

- **Environmental Protection & Management Order 2016**
- **Environmental Impact Assessment Regulations –development**
- **Air Pollution Control Regulations – development**
- **Electrical Order – draft**
- **Electrical Safety Appliances Regulations – development**
- **Electrical Safety Regulations - development**
- **Radiation Order – draft**
- **Scaffolding Code of Safety Practices**
- **BIG Council**
- **Decommissioning & Restoration Guidelines**



# On the Agenda for the Construction Industry

## **Minimum HSE training**

- Introduction of minimum awareness training for construction sites.

## **Scaffolding standards**

- Minimum requirements for scaffold construction
- Minimum training requirements
- Minimum qualifications for scaffold construction/inspection

## **Introduction of formal regulatory site inspections**

- Planned program of site visits- check compliance with regulations

## **Introduction of formal incident reporting and investigation**

- Legal requirement to report accidents and incidents
- Formal investigation

## **Introduction of BIG forums and support /guidance**



# Construction Industry Practices?







## Construction Industry Practices?







## Why the focus on the Construction Industry?





## Construction Industry Practices?



Working at height  
goes to a new level!



## Reported Work Related Fatality Statistics

Past three year statistics indicate the following areas of concern

Fall from height

Impact by moving objects

YEAR	INDUSTRY	STRUCK	FALL FROM HEIGHT	ELECT	OTHER	YEARLY TOTALS
2016 TO MAY	CONST	2		2		4
2015	CONST	4	4		1	10
	OTHER				1	
2014	CONST	2	3		2	12
	OTHER				5	
2013	CONST	3	2			10
	OTHER	1	3	1		
OVERALL TOTALS		12	12	3	9	36
CONSTRUCTION TOTALS		11	9	2	3	25

Other includes inhalation of gases, fire, broken grinding disc





## Reported Work Related Fatality Statistics

Comparison to UK for 2015

STATISTIC	UK	BRUNEI
Number Employed	Circa 30 Million	Circa 200k
Work Related Fatalities	144	10
Fatality Rate per 100K workers	0.48	5

Brunei Fatality Rate is presently 10 times that of UK

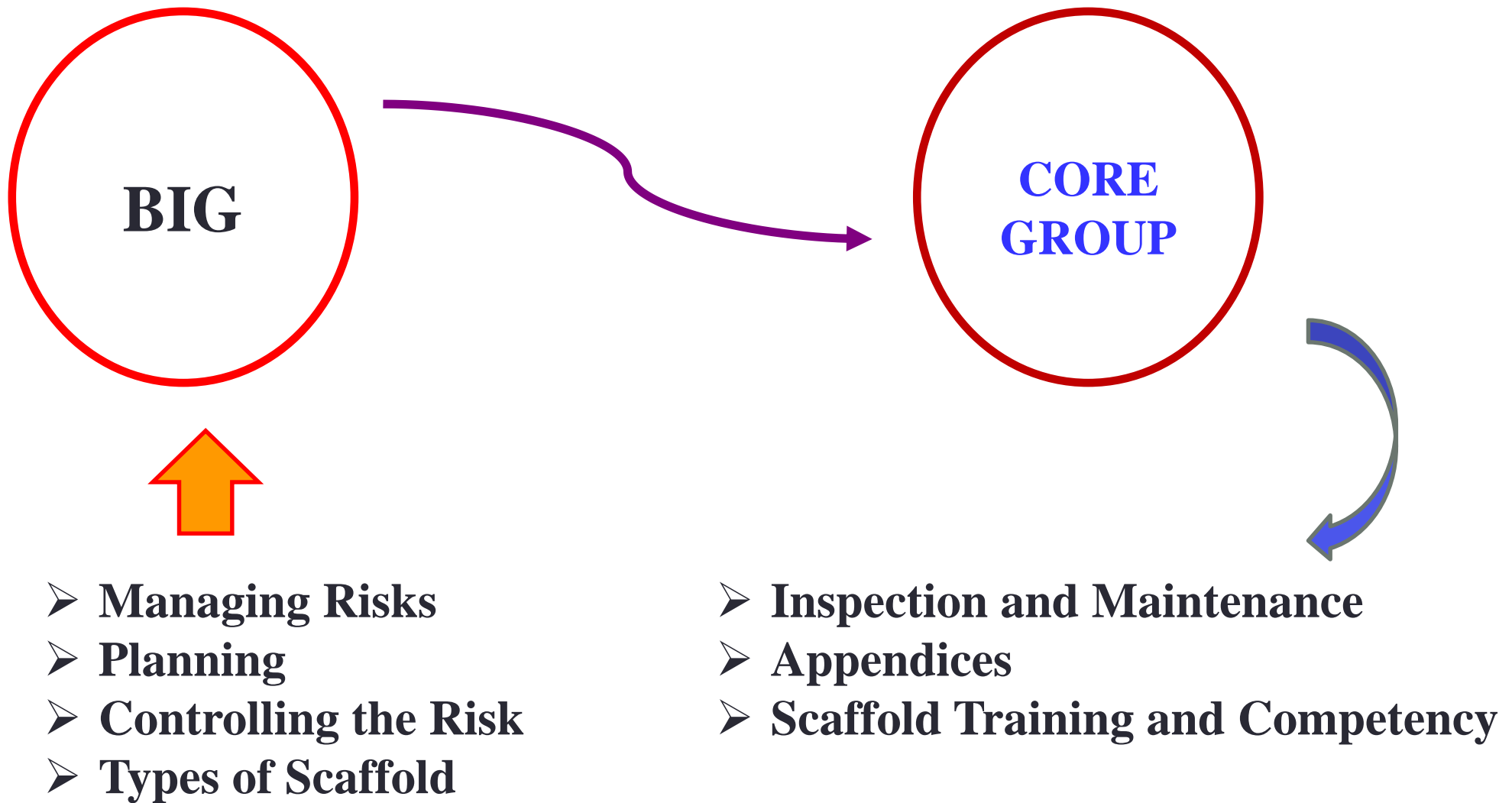
UK has reduced their figure by 50% since 1997

Proposed National KPI for Brunei is to reduce our Fatality rate by 50% by 2025

**TARGET ZERO BY 2035**



## Scaffolding Code of Safety Practices





## HSE WAY FORWARD

### ACTIONS:

- EIDPMO HSE will arrange site visits to **review safety management systems**, practices and workplace safety procedures
- Companies to report incidents and fatalities using the IIN form (Initial Incident Report) on the EIDPMO website ([www.ei.gov.bn](http://www.ei.gov.bn))
- Scaffolding Code of Practice will be forwarded to Industry for comment and review by end **September 2016**. Feedback requested back within **1 MONTH**

### EIDPMO GENERAL CONTACT:

**Hjh Suhana Binti Hj Md. Daud @ Mohd. Daud** [[suhana.daud@jpm.gov.bn](mailto:suhana.daud@jpm.gov.bn)]



## AGENDA

- 0900 – 0930 hours: Registration**
- 0930 – 0935 hours: Safety Briefing**
- 0935 – 0940 hours: Doa Selamat**
- 0940 – 0950 hours: Opening Remarks**
- 0950 – 1000 hours: Electricity Order & Regulations Update**
- 1000 – 1015 hours: National Standards Centre**
- 1015 – 1030 hours: Governance & Compliance Authority**
- 1030 – 1045 hours: HSE Competence Capability Framework**
- 1045 – 1100 hours: Labour Department Presentation**
- 1100 – 1115 hours: Way Forward – Legislative Update**
- 1115 – 1145 hours: Q & A**
- 1145 hours: END**



## B.I.G.

Q & A

# Government Resources

- Labour Department:  
<http://www.labour.gov.bn>
- Attorney General's Chamber:  
<http://www.agc.gov.bn/>
- Energy & Industry Department Prime Minister's Office: <http://www.ei.gov.bn>

# EIDPMO Website - HSSE

A A A

[Prime Minister's Office](#) [Departments](#) [Ministries](#) [Sitemap](#)


جاڤن تنالك دان قرايندوسترين جاڤن فردان منتري  
ENERGY AND INDUSTRY DEPARTMENT  
PRIME MINISTER'S OFFICE | BRUNEI DARUSSALAM

darussalam  
gov  
.bn

[Home](#) [About Us](#) [Tenders](#) [DARe](#) [LBD](#) [EICF](#) **[HSSE](#)** [BNERI](#) [Contact Us](#) [Vacancies](#) [Search](#)
[Initial Incident Notification](#)
[Advice & Guidance](#)
[Information Sharing](#)
[Contact Us](#)
[Note to Industry](#)
[Law](#)
[MORE...](#)
[Information Sheet](#)
[Safety Case](#)
**Oil & Gas related Emergency:**

+673 8715261

**HSSE Enquiries:**

+673 2384488 ext:

1112/1435/1439/1451

 Email: [hsse@energy.gov.bn](mailto:hsse@energy.gov.bn)


**HSSE Emergency  
Duty Phone No.  
8715261**

**Stop and Think**  
**Safety & Health**

**HSSE**  
Energy Department  
Prime Minister's Office



**Energy & Industry Department Prime Minister's Office**

**THANK YOU**