



LEARNING FROM INCIDENTS NEWSFLASH

BSP-NF-201365

| BSP – Wells engineering & Well Services

| October 2013

Parted wires around the lifting sling when lifting a jacking frame

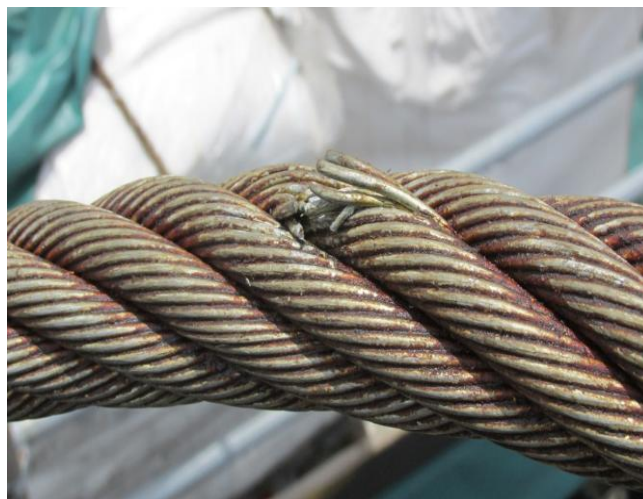
Target audience for this newsflash

- TWD community
- TWC community

What happened?

On 22nd October 2013 at approximately 11:00 hrs, a heavy lift was commencing from the vessel to the platform. This lift involved a jacking frame with a weight of 23 tonnes. The crane picked up the load from the vessel's main deck and swung it to the platform where it was to be positioned. Once above the platform, the crane operator lowered the load communicating closely with the banksman on the platform. Once the load was lowered,

the tensions in the slings were slacked but the swell caused the crane block to swing together with the lifting slings. The crane block and slings could not be controlled to safely unhook and was hitting the gooseneck and the injector so the decision was made by the banksman to bring the jacking frame back to the vessel. After inspecting the slings and the jacking frame a few strands of wire surrounding the core of the sling were observed to have been parted. No injury was sustained by personnel during the operation.



Why it happened

The swell caused the crane block together with the slings to move in an oscillating motion. The slings got caught on the jacking frame, together with the impact against the injector and the gooseneck caused strands of wires to be parted on the lifting slings.

Suggested toolbox/safety meeting questions

- Ensure proper communication between the involved personnel performing the lifting operation i.e. banksman, crane operator and the riggers.
- Pre-DROPs checklist must be completed prior to any lifts between the Operations supervisors and the crew.
- Ensure red zones are recognised by all personnel
- Ensure that all risks have been covered and addressed to the lifting crew together with control measures to reduce risk.
- The lifting crew must be competent to do the job.
- Inspections of all lifting equipment must be carried out prior to any lifts performed to ensure the safety of the crew.

Further information

Contact: Chris.Lorenz@shell.com

Tel:- 337-4453 / 8775595

This document is made available for information only and on the condition that (i) it may not be relied upon by anyone, in the conduct of their own operations or otherwise; (ii) neither Brunei Shell Petroleum Company Sendirian Berhad (BSP) nor any other person or company concerned with furnishing information or data used herein (A) is liable for its accuracy or completeness, or for any recommendations or advice given in or any omission from this document, or for any consequences whatsoever resulting directly or indirectly from any use made of this document by any person, even if there was a failure to exercise reasonable care on the part of BSP or any other person or company as aforesaid; or (B) makes any claim, representation or warranty, express or implied, that acting in accordance with this document will produce any particular results with regard to the subject matter contained herein, or to satisfy the requirements of any applicable federal, state or local laws and regulations and (iii) nothing in this document constitutes technical advice. If such advice is required it should be sought from a qualified professional advisor. The content of this document may (i) be based on, but not identical to facts relating to a third party incident about which BSP has become aware; (ii) contain recommendations that are one, but not necessarily the only way, of addressing incident learnings.