

AWARENESS ON SAFETY AND HEALTH AT WORKPLACE



By

Justina Liew Vun Ching

Head of Health, Safety & Environment Section

Department of Administration and Finance

Public Works Department





SAFETY POLICY

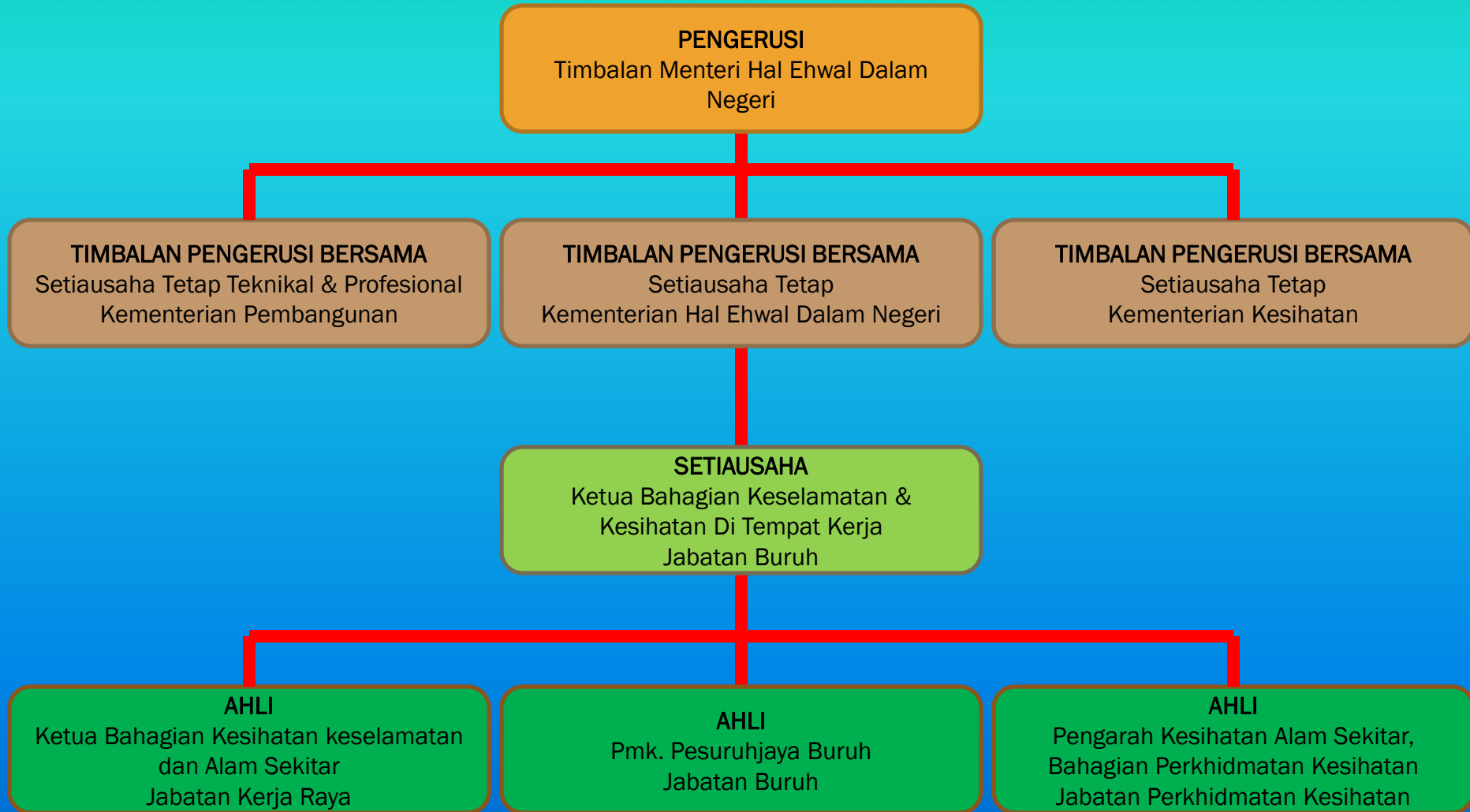
It is the Ministry of Development's policy that all work shall be carried out on any project with safety as a primary objective and that all persons engaged in this work shall act positively to prevent injury to themselves or to others.

Project Officers are responsible for safety in their own areas. All persons however have a clear responsibility to do all they can to prevent injury to themselves or to others.

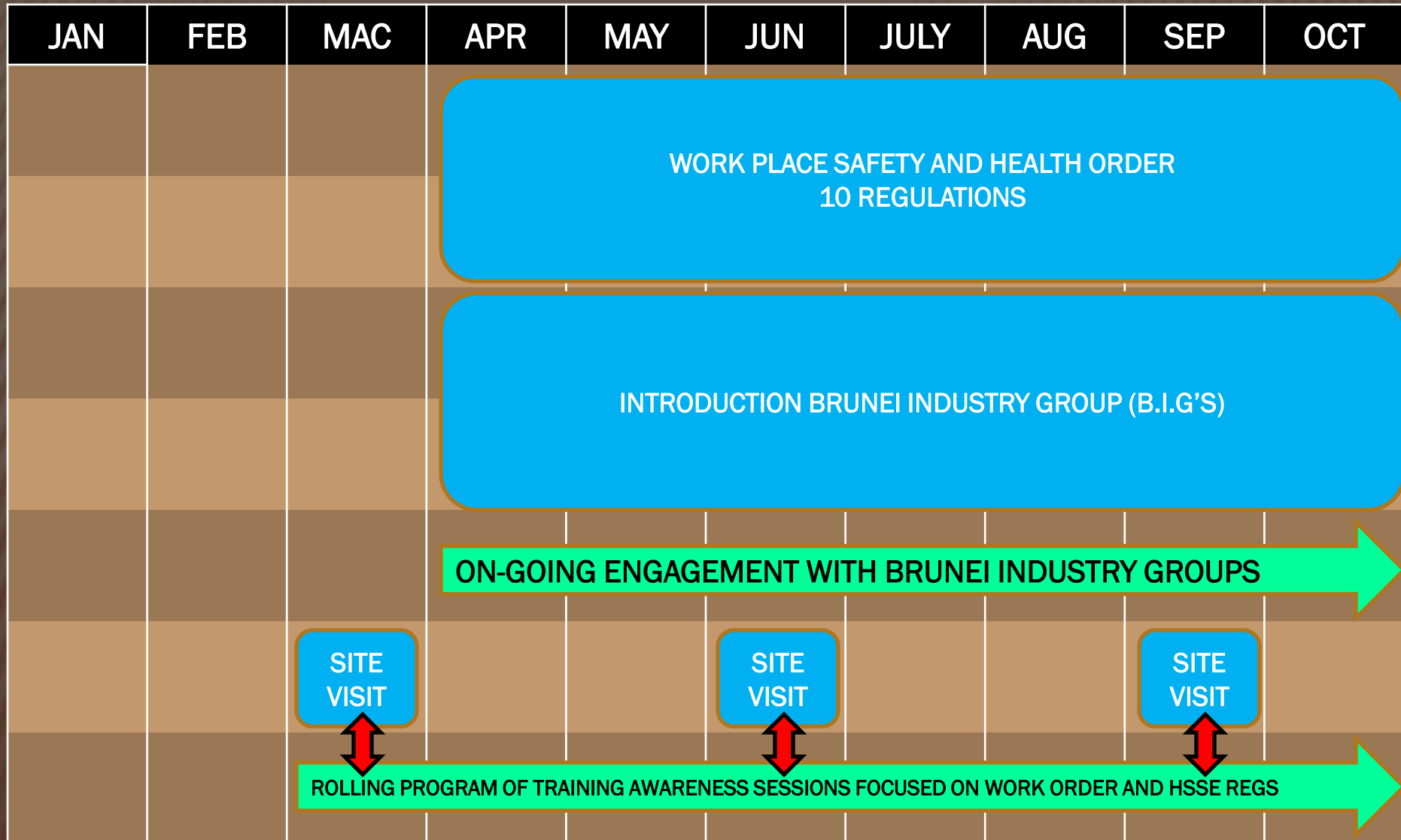
The Ministry and Departments under Ministry are also committed to carrying out our operations paying full regard to the preservation of the Environment.

Guidelines for Safety Organisation (GD 12), Site Safety Auditing (GD 8), Guidelines for Safety for Safety on Construction Sites, Site Safety Assessment and other relevant guidelines from the Ministry of Development shall be complied with.

STRUKTUR JAWATANKUASA PANDU KESELAMATAN DAN KESIHATAN TEMPAT KERJA



STRATEGY OVERVIEW



CURRENT KNOWLEDGE

Estimates 2.34 million people died from work related accidents or diseases in 2008

- 2.02 million caused by various types of disease (work-related cancers, circulatory diseases and communicable diseases)
- 321,000 work-related accidents
- Equates to average 6,300 work-related deaths every day.

SAFETY CONCEPT-OVERKILL?

- Good health and safety is about saving lives, supporting business and enterprise and sustaining the economy.
- We think better education and government promotion of the sensible steps the law requires should help debunk (myths about OSH)
- Health & Safety is about enabling things to happen and keeping people safe, its certainly not about pointless paperwork.

(Richard Jones, Head of Policy & Public Affairs for the Institution of Occupational Safety & Health, 24/8/2011)

RECENT GLOBAL STATEMENT

- The XIX World Congress on Safety and Health at Work recently concluded that “decent work is safe work”
- It also called for a renewed commitment to build and maintain a preventative safety & health culture globally through effective advocacy so as to increase awareness, knowledge and understanding of risk and hazards and how they may be effectively managed

(15/9/2011; Istanbul, Turkey)

CONSTRUCTION INDUSTRY IN BRUNEI DARUSSALAM

- ✘ Brunei experiencing economic growth rate at average 1.3% of GDP per annum during year 2008 to 2009 construction industry (\$477.4 million in 2009)

Source - Annual National Account, JPKE 2009

- ✘ The high economic growth rate has positive impact on the construction industry
 - ❖ Increased in injuries and fatalities
 - ❖ Lack of focus on Safety and health

- ✘ Brunei construction Industry has strong influence on country's percentage distribution of economy and account over 4.1% of the GDP

Source - Annual National Account, JPKE 2009

- ✘ The Industry's contribution to employment is 33,591 make up 31% of employment in the private sector

* statistics - Brunei Darussalam Statistical Yearbook JKPE 2009

SAFETY & HEALTH IN CONSTRUCTION INDUSTRY

✗ 2011 Construction Industry, Reported accident cases **137**

- ❖ 4 (3%) cases resulted death
- ❖ 47 (35%) cases resulted in injury or permanent disabilities
- ❖ 86 (62%) minor injuries

**Source - Health Services Department MOH, Labor Department, Public Works Department*

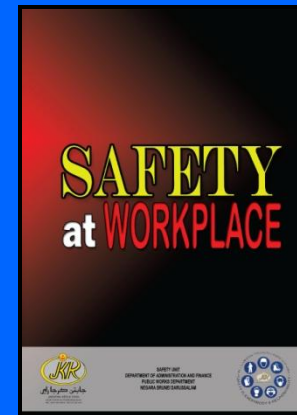
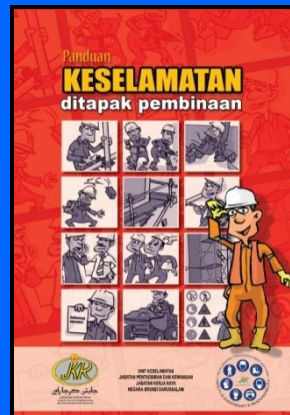
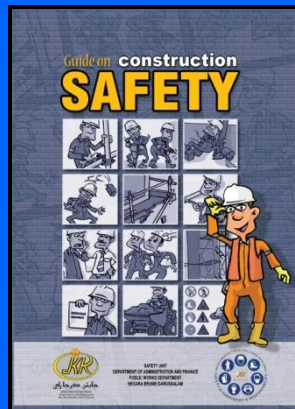
✗ Malaysia number of recorded accidents in construction industry 2003 is 4,654

- ❖ 95 (2%) cases resulted death
- ❖ 566 (12.2%) resulted in injury or permanent disabilities
- ❖ 3,993 (85.8%) minor injuries

**Source - Malaysia SOCSO Annual Report*

SAFETY & HEALTH REGULATIONS AND GUIDELINES

- ✘ Good practice guidelines to achieve compliance to safety & health legislation
 - Regulation for construction sites, Ministry of Development
 - Handbook on good practice on safety and health in construction sites
 - The contents is illustrated and explained in cartoons, drawings and simple plain language
 - Target general workers who cannot read or write properly in construction



SAFETY & HEALTH R & D TECHNOLOGY

- ✗ Introducing mechanization and new method of construction optimize labor utilization
- ✗ New methods for preventing fall from heights
 - Falling from height is one of the leading causes of fatalities and disabling injuries in construction industry
 - General control measures currently adopted
 - ❑ Scaffolds
 - ❑ Safety belts
 - ❑ Safety lines
 - ❑ Guardrails

Due to cost saving measure those precautionary are implemented half heartedly

- ✗ Improve the situation consider
 - Mobile elevation work platform
 - Mast climbing work platforms
 - Motorized mobile scaffolds



SAFETY & HEALTH R & D TECHNOLOGY

- ✗ Professionals/ sub-professional
 - All engineers, surveyors (Quantity and land) architects, technical assistants, technician, clerk of works should be encouraged to attend **at least one safety and health courses a year**
- ✗ Competency & skill training
 - Skill requirements must include safe usage and handling plant, machinery, new technology and tools
- ✗ Specialized training for high risk jobs
 - Worker exposed to high risk (high rise buildings, bridge construction, tunneling work) must be adequately trained with
 - ❑ proper techniques of identifying associated hazards
 - ❑ assessing potential risk
 - ❑ introducing suitable control measures



SAFETY & HEALTH PROMOTIONS

- ✘ Raise awareness to improve safety & health performance
 - Promotion thorough electronic media
 - Trade/contractor associations
 - Promoting safe work practices
 - development of safety signs in local languages
 - Annual award – incentive awards for best contractor effort and commitment to health and safety
 - Publication of safety & health prosecutions
 - rarely published in major newspaper and electronic



CONSTRUCTION SITES SAFETY ASSESSMENT/AUDIT FORM



جانبين كراجايل

JABATAN KERJA RAYA, KEMENTERIAN PEMBANGUNAN, NEGARA BRUNEI DARUSSALAM
PUBLIC WORKS DEPARTMENT, MINISTRY OF DEVELOPMENT, NEGARA BRUNEI DARUSSALAM

BORANG PENILAIAN/AUDIT KESELAMATAN TAPAK PEMBINAAN CONSTRUCTION SITES SAFETY ASSESSMENT/AUDIT FORM

REF : DAF/HSU/FRM01

TAJUK PROJEK PROJECT TITLE			
NO. KONTRAK CONTRACT NO.		PEGAUAI PENGUASA SUPERVISING OFFICER	
PEMBORONG UTAMA MAIN CONTRACTOR		KONSULTAN CONSULTANT	
JUMLAH KONTRAK CONTRACT AMOUNT	\$	JUMLAH BAGI KESELAMATAN AMOUNT FOR SAFETY	\$
TEMPOH KONTRAK CONTRACT PERIOD		TARIKH MULA DATE COMMENCE	HINGGA TO
KEMAJUAN PROGRESS	%		

1.0 ALAT-ALAT KESELAMATAN SAFETY GEARS	%	2.0 KEBERSIHAN TAPAKBINA SITE TIDINESS	%
1.1 Topi Keselamatan dipakai ditapakbina Safety helmets used on site		2.1 Penyusunan barang binaan & kelengkapan yang sempurna dan teratur Materials, tools & equipment properly stacked/stored at designated places	
1.2 Kasut keselamatan dipakai ditapakbina Safety shoes/boots used on site		2.2 Kawasan kerja dan sekitarnya bersih dari sisa binaan dan sebarang sampah Worksite, passages & surrounding area clean from rubbish & debris	
1.3 Pakaian yang bersesuaian digunakan Appropriate clothing used		2.3 Tiada takungan air, tumpahan minyak dan sebagainya No standing water/oil spills, etc.	
1.4 Tali keselamatan dipakai bila bekerja ditempat tinggi melebihi 1.8m Safety belt & harness used when possibility of falling 1.8m		2.4 Penyediaan skip/tong pembuangan sisa binaan dan sampah Special facility e.g. skip for disposable of rubbish & debris	
1.5 Sarung tangan, alat pelindung muka, kacamata keselamatan Glove, mask, goggles			
PERATUS PURATA AVERAGE PERCENTAGE		PERATUS PURATA AVERAGE PERCENTAGE	

3.0 LALUAN KETAPAKBINA SITE ACCESS	%	4.0 KERJA ELEKTRIK SEMENTARA TEMPORARY ELECTRICAL WORKS	%
3.1 Penyediaan laluan masuk ke tapakbina bagi kenderaan/jentera berat yang mencukupi Adequate network of access for vehicles/heavy equipments		4.1 Sambungan dari talian utama dan suis meter elektrik yang diluluskan Approved connection to main lines and meter switch	
3.2 Permukaan jalan/laluan dipelihara dengan sempurna Roadway surfaces constructed and maintained properly		4.2 Pemasangan papan suis meter, fius, soket yang diluluskan Approved switchboard meter, fuses & electrical points	
3.3 Laluan-laluan ke tempat/kawasan kerja selesai dan tidak terhalang Access to workplaces, passageways, unobstructed and comfortable		4.3 Wayar pembumi dipasang dengan teratur Earthing properly installed	
3.4 Kemudahan tempat naik/tangga yang kukuh serta selamat kedudukannya Ladders/stairs installed safely and secured properly		4.4 Pemasangan kabel/wayar yang sempurna Wires/cables properly fastened & neatly installed	
3.5 Tanda amaran/keselamatan dalam & luar tapakbina dipasang Safety warning signs inside & outside worksite installed		4.5 Dijaga dari basah & rosak semasa diletakkan pada permukaan tanah/talai Protected from being wet & damage when at ground/floor surface	
PERATUS PURATA AVERAGE PERCENTAGE		PERATUS PURATA AVERAGE PERCENTAGE	

5.0 PERKAKAS & PERALATAN/MESIN ELEKTRIK TOOLS & ELECTRIC-POWERED MACHINERY	%	6.0 MEKANIKAL (KENDERAAN/JENTERA BERAT/LOJI) MECHANICAL (VEHICLES/HEAVY EQUIPMENT/PLANT)	%
5.1 Sentiasa dipelihara & disimpan ditempat dihaskan Properly checked/maintained & stored in designated area		6.1 Berkeadaan bersih & dipelihara dengan sempurna Clean & properly maintained	
5.2 Cara penggunaan yang betul, sesuai & selamat untuk kerja yang dilakukan Appropriate & safe use of tools for work/operation		6.2 Alat pelindung dibahagian bergerak dipasang Guards on moving parts	
5.3 Alat pengawal/pelindung bahagian bergerak dipasang Guards on moving parts		6.3 Diletakkan & didukung pada tempat yang stabil/kukuh Stable, firm base & properly supported	
5.4 Dikendalikan oleh pekerja yang mahir Operated by skilled workers		6.4 Sijil pengesahan keselamatan jentera pengangkat/kren Valid lifting equipment/crane safety certification	
PERATUS PURATA AVERAGE PERCENTAGE		PERATUS PURATA AVERAGE PERCENTAGE	

MUKA DARI
PAGE FROM 3

7.0 PERANCAH SCAFFOLDING	%	8.0 KERANGKA ACUAN FORMWORKS	%
7.1 Penggunaan barang/peralatan yang baik Good materials used		8.1 Penggunaan barang binaan yang baik Good materials used	
7.2 Didirikan dengan teguh pada tempat yang stabil & selamat Upright with adequate base support, stable & safe		8.2 Pemasangan yang kemas & teratur Neat & tidy installations	
7.3 Penyediaan tempat kerja yang selamat pada ketinggian 2m ke atas Provision of secure & safe working platforms at 2m height and above		8.3 Pemasangan pendokong yang kukuh & selamat Properly supported & secured	
7.4 Menyediakan laluan yang selamat ketingkat lain To provide safe access to upper level		8.4 Penyediaan pelantar & laluan yang kukuh untuk pekerja, bahan binaan & kelengkapan semasa kerja konkrit dilakukan Adequate & properly supported working platforms & access for workers, materials & equipment activities	
7.5 Penghadang dan papan tepi dipasang Guardrails and toe boards installed			
PERATUS PURATA AVERAGE PERCENTAGE		PERATUS PURATA AVERAGE PERCENTAGE	

9.0 KIMPALAN & PEMOTONGAN GAS/ARKA GAS/ARC WELDING & CUTTING	%	10.0 KERJA-KERJA ATAP ROOFWORKS	%
9.1 Penggunaan & penempatan silinder gas yang sesuai & selamat Appropriate & safe handling, stacking of gas cylinders		10.1 Barang binaan disusun dengan selamat di atas atap Safe stacking of materials on rooftop	
9.2 Penyimpanan, penjagaan & perlindungan peralatan/kelengkapan kimpalan yang betul dan selamat Proper storage, maintenance & protection of welding equipment/accessories		10.2 Pengawasan dari kejatuhan pada tepi atap dipasang Fall protection facilities at roof edges installed	
9.3 Wayar/kabel elektrik & hos gas dipasang dan dipelihara dengan betul dan selamat Electrical wires/cables & gas hoses properly installed and maintained		10.3 Penggunaan tangga/tangga perangkak Crawl boards/ladders used	
9.4 Tanda amaran dan penghadang kawasan kerja dipasang Warning signs and work area barricaded		10.4 Laluan yang selamat untuk pekerja disediakan Safe access for workers	
PERATUS PURATA AVERAGE PERCENTAGE		PERATUS PURATA AVERAGE PERCENTAGE	

11.0 PENGGOBREKAN/PENGKALIAN EXCAVATIONS	%	12.0 KEBAJIKAN PEKERJA & LAIN-LAIN KEMUDAHAN WORKER'S WELFARE & OTHER FACILITIES	%
11.1 Penyediaan dinding penahan & cerun tepi yang mencukupi Adequate & proper shoring & side supports		12.1 Tempat memasak dan ruang makan yang cukup & bersih Adequate & clean sanitary cooking and dining areas	
11.2 Kemudahan keluar/masuk bagi pekerja disediakan Adequate access for workers		12.2 Bilik air dan tandas yang cukup, bersih & dipelihara Adequate, clean & well-maintained sanitary toilets and bathrooms	
11.3 Penghadang & tanda amaran yang sesuai dipasang Barriers & warning signs		12.3 Tempat tinggal yang selesa dan cukup peredaran udara Proper accommodation and sufficient air circulation	
11.4 Bersih daripada sampah-sarap & takungan air Free from debris & water		12.4 Alat pemadam api yang sesuai dan cukup disediakan Adequate and suitable fire fighting equipment installed	
11.5 Dihadap pada jarak yang selamat daripada kenderaan, barang binaan & jentera Barricaded at a safe clearance from vehicles, materials & equipment		12.5 Peli ubat kecemasan dan isi kandungan yang mencukupi disediakan Adequate first-aid boxes/kits with contents available	
PERATUS PURATA AVERAGE PERCENTAGE		PERATUS PURATA AVERAGE PERCENTAGE	

PERATUS KESELURUHAN (%)
OVERALL PERCENTAGE (%)

ULASAN
COMMENTS

ROADWORKS' SAFETY ASSESSMENT FORM



جائتھن صرحا راي

JABATAN KERJA RAYA
MINISTRY OF DEVELOPMENT

JABATAN KERJA RAYA, KEMENTERIAN PEMBANGUNAN, NEGARA BRUNEI DARUSSALAM
PUBLIC WORKS DEPARTMENT, MINISTRY OF DEVELOPMENT, NEGARA BRUNEI DARUSSALAM

BORANG PENILAIAN KESELAMATAN KERJA-KERJA JALAN RAYA ROADWORKS' SAFETY ASSESSMENT FORM

TAJUK PROJEK PROJECT TITLE			
NO. KONTRAK CONTRACT NO.		PEGAWAI PENGUASA SUPERVISING OFFICER	
PEMBORONG UTAMA MAIN CONTRACTOR		KONSULTAN CONSULTANT	
JUMLAH KONTRAK CONTRACT AMOUNT	\$	JUMLAH BAGI KESELAMATAN AMOUNT FOR SAFETY	\$
TEMPOH KONTRAK CONTRACT PERIOD		TARIKH MULA DATE COMMENCE	HINGGA TO
KEMAJUAN PROGRESS	%		

1.0	ALAT-ALAT KESELAMATAN SAFETY GEARS	%	2.0	LAMPU AMARAN/ISYARAT BERKELIP WARNING LIGHT/BEACONS OR BLINKERS	%
1.1	Jaket keselamatan pantul cahaya Reflective safety jacket		2.1	Lampu amaran dan isyarat dipasang semasa kerja waktu gelap/malam Warning light/blinkers install during dark/night	
1.2	Topi keselamatan Safety helmets		2.2	Lampu amaran/isyarat jelas dilihat dan tidak terhalang Warning light/blinkers clearly visible and unobstructed	
1.3	Kasut keselamatan Safety boots		2.3	Lampu pencahayaan kawasan kerja terang dan mencukupi Flood light for work area adequately and clear	
1.4	Pelindung pendengaran Earing protection		2.4	Pengawal/isyarat bendera digunakan Flagman control signal used	
1.5	Sarung tangan Protective gloves		2.5	Pengawal/isyarat tanda "BERHENTI/JALAN" digunakan "STOP/GO" signal board used during work operation	
1.6	Pelindung muka/pernafasan Face mask/respirator protection				
1.7	Pakaian yang bersesuaian Appropriate working clothes				

PERATUS PURATA
AVERAGE PERCENTAGE

PERATUS PURATA
AVERAGE PERCENTAGE

3.0	PAPAN TANDA/ISYARAT DAN ALAT AMARAN SIGNAGES, SIGNALS AND WARNING SIGNS	%	4.0	LALUAN MASUK JENTERA BERAT/KENDERAAN KE TAPAK BINA SITE ACCESS FOR HEAVY MACHINERY/VEHICLES	%
3.1	Alat amaran dan papan tanda dipasang mengikut panduan Signages and warning signs installed accordingly and systematically		4.1	Laluan masuk jentera berat/kenderaan pengangkutan Adequate access for heavy equipment, transport vehicles	
3.2	Tidak terhalang dari sebarang benda yang diletakkan Not obstructed by any item on site		4.2	Laluan ke tempat kerja tidak terhalang Access to workplaces unobstructed	
3.3	Kon keselamatan tambahan disusun secara teratur dan mencukupi Additional safety cones installed properly and adequately		4.3	Laluan yang dibina, dipelihara dengan sempurna Access properly constructed and maintained	
3.4	Penghadang kawasan kerja dipasang dengan lengkap dan sempurna Work area barricaded adequately and properly		4.4	Jalan raya awam sedia ada bersih dan dipelihara dengan sempurna Existing public road clean and properly maintained	

PERATUS PURATA
AVERAGE PERCENTAGE

PERATUS PURATA
AVERAGE PERCENTAGE

5.0	KEBERSIHAN TAPAKBINA DAN PENYUSUNAN BARANG BINAAN HOUSEKEEPING & SITE TIDINESS	%	6.0	JENTERA BERAT DAN KENDERAAN PENGANGKUTAN HEAVY MACHINERY AND TRANSPORT VEHICLES	%
5.1	Kawasan kerja dan sekitarnya bersih Worksite & surround area clean and tidy		6.1	Bersih dan dipelihara Clean and maintained properly	
5.2	Barang binaan, perkakas dan kelengkapan disimpan/disusun dengan sempurna Materials, tools and equipment properly stored		6.2	Alat pelindung di bahagian bergerak dipasang Guards on moving parts	
5.3	Bersih dari sebarang tumpahan air/tumpahan minyak dan sebagainya No standing water/oil spills, etc		6.3	Didukung di atas tanah yang kukuh dan stabil Stable, firm base & properly supported	
			6.4	Diindungi dari cuaca buruk dan semasa operasi Protected against adverse weather and work in progress	

PERATUS PURATA
AVERAGE PERCENTAGE

PERATUS PURATA
AVERAGE PERCENTAGE

MIKHA
PAGE 3

DARI
FROM 3

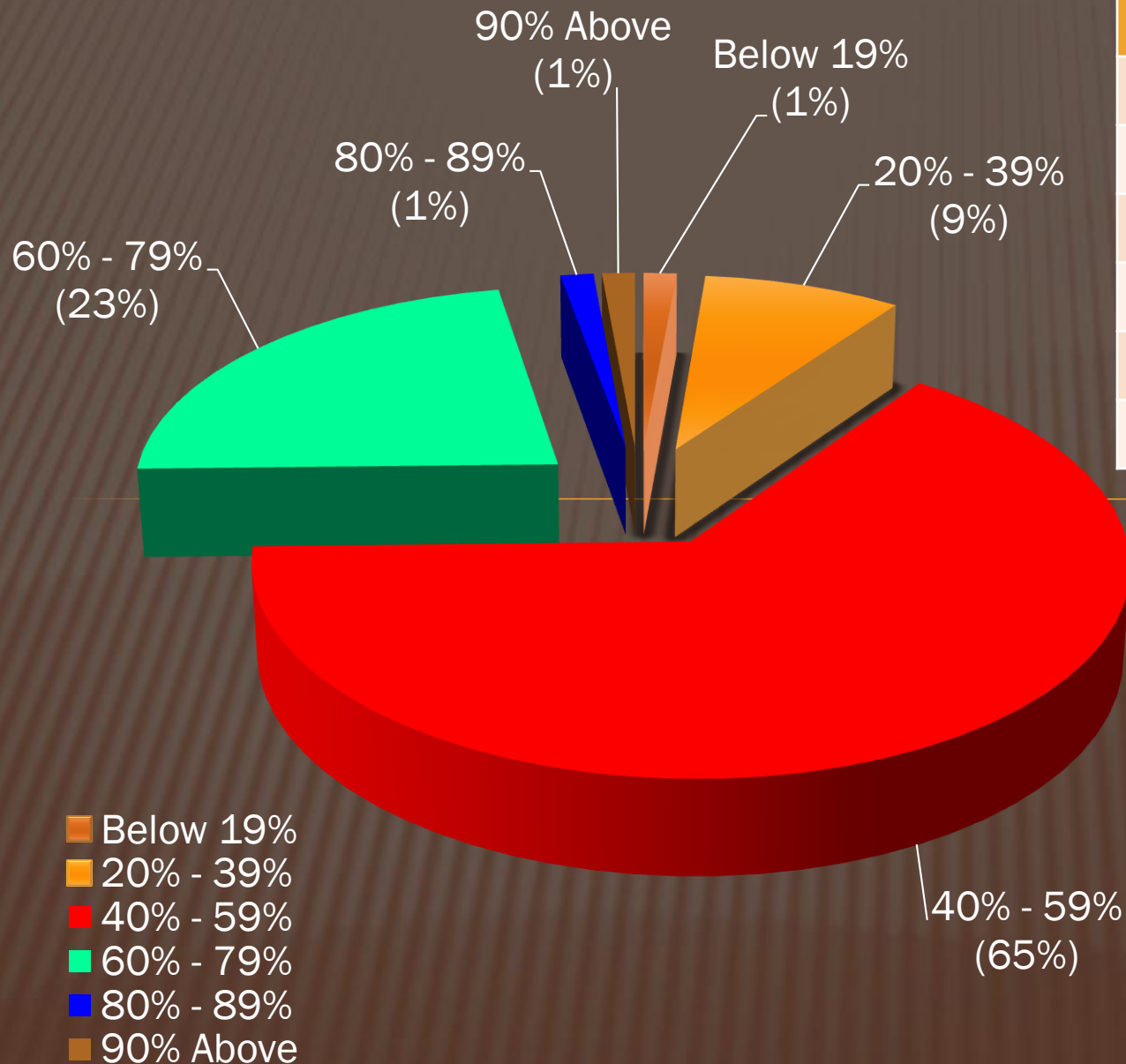
7.0	KERJA-KERJA PENGALIAN/PEPARIT EXCAVATION WORKS	%	8.0	ALAT PERKAKAS TANGAN/ELEKTRIK KUASA ANGIN DAN MESIN MANUAL HAND TOOL/ELECTRICAL PNEUMATIC POWERED TOOL AND MACHINE	%
7.1	Dinding penyangga atau penahan peparit yang mencukupi dan sempurna Adequate of proper shoring and side supports		8.1	Alat perkakas tangan dan elektrik berkeadaan baik Hand and electrical tools in good condition	
7.2	Laluan yang selesa dan mencukupi bagi pekerja Adequate access for workers		8.2	Mesin gerudi/pemecah jalan digunakan dengan betul dan selamat Pneumatic drill/road breaker correctly and safely used	
7.3	Tanda rintangan dan halangan jelas dilihat Barriers and conspicuous signs		8.3	Perkakas kimpalan gas/arka, tong gas dan mesin digunakan dengan betul dan selamat Gas arc welding tool, gas cylinder and machine correctly and safely used	
7.4	Bersih dan bebas dari air dan segala sisa sampah Free from debris and waste		8.4	Disimpan dan dipelihara dengan sempurna Maintained and stored properly	
7.5	Dihadang pada jarak yang selamat daripada barang binaan dan kelengkapan jentera/mesin Barricaded at safe clearance from materials, heavy equipments and machinery		8.5	Dikendalikan oleh pekerja mahir dan berpengalaman Operated by skilled and experience workers	
PERATUS PURATA AVERAGE PERCENTAGE			PERATUS PURATA AVERAGE PERCENTAGE		

9.0	TIAO ELEKTRIK, KABEL ATAS DAN LAIN-LAIN KABEL BAWAH TANAH ELECTRICAL PYLONS, OVERHEAD CABLES AND OTHER UNDERGROUND CABLE	%	10.0	KEBAJIKAN PEKERJA DAN KEMUDAHAN LAIN WORKERS WELFARE AND OTHER FACILITIES	%
9.1	Tidak ada kelengkapan jentera diletakkan di bawah kabel atas berkuasa tinggi No equipment parked under high voltage cables		10.1	Tempat tinggal/rehat pekerja mencukupi Adequate accommodation/rest area	
9.2	Diindungi dengan lengkap dan sempurna Properly and adequately protected		10.2	Kemudahan tandas dan tempat mandi Adequate clean sanitary toilets and bathrooms	
9.3	Tiada operasi dijalankan semasa hujan No operation during raining		10.3	Alat pemadam api disediakan Fire extinguisher provided	
9.4	Langkah keselamatan/perhatian lebih apabila bekerja di kawasan yang terdapat kabel-kabel perkhidmatan sedia ada Extra precautionary measures/attention taken when working at the vicinity of existing services cables		10.4	Peti ubat kecemasan mencukupi disediakan First-aid boxes adequately provided	
			10.5	Pondok pengawal disediakan Guardhouse installed	
PERATUS PURATA AVERAGE PERCENTAGE			PERATUS PURATA AVERAGE PERCENTAGE		

PERATUS KESELURUHAN (%)
OVERALL PERCENTAGE (%)

ULASAN
COMMENTS

JUMLAH PERATUS KESELURUHAN AUDIT KESELAMATAN BAGI TAHUN 2010 - 2012



PECAHAN STATISTIK KEMALANGAN INDUSTRI PEMBINAAN DI NEGARA BRUNEI DARUSSALAM BAGI TAHUN 2011

ACCIDENT STATISTIC BREAKDOWN FOR CONSTRUCTION INDUSTRY IN NEGARA BRUNEI DARUSSALAM FOR THE YEAR 2011

			TAHAP KECEDERAAN <i>DEGREE OF INJURY</i>						
JENIS-JENIS KEMALANGAN <i>TYPES OF ACCIDENT</i>	SEKTOR <i>SECTOR</i>		RINGAN <i>MINOR</i>		PARAH <i>SERIOUS</i>		KEMATIAN <i>FATALITY</i>		JUMLAH MENGIKUT JENIS KEMALANGAN <i>TOTAL NUMBER ACCORDING TO TYPES OF ACCIDENT</i>
	KERAJAAN <i>GOVERNMENT</i>	SWASTA <i>PRIVATE</i>	KERAJAAN <i>GOVERNMENT</i>	SWASTA <i>PRIVATE</i>	KERAJAAN <i>GOVERNMENT</i>	SWASTA <i>PRIVATE</i>	KERAJAAN <i>GOVERNMENT</i>	SWASTA <i>PRIVATE</i>	
JATUH <i>FALL</i>	8	36	-	27	8	9	-	-	44
DITIMPA BENDA <i>STRUCK BY FALLING OBJECTS</i>	6	46	1	37	4	8	1	1	52
TERLANGGAR/TERPIJAK BENDA <i>STRUCK/STEPPING ON OBJECTS</i>	3	5	-	5	3	-	-	-	8
ALAT PERKAKAS <i>TOOLS</i>	2	18	1	14	1	4	-	-	20
RENJATAN ELEKTRIK <i>ELECTROCUTION</i>	1	-	-	-	1	-	-	-	1
MESIN <i>MACHINES</i>	2	3	-	-	2	3	-	-	5
JENTERA BERAT <i>HEAVY EQUIPMENT</i>	-	1	-	-	-	-	-	1	1
KENDERAAN PEMBINAAN <i>CONSTRUCTION VEHICLES</i>	2	1	-	-	1	1	1	-	3
LAIN-LAIN KEMALANGAN <i>OTHERS</i>	1	2	1	-	-	2	-	-	3
JUMLAH MENGIKUT SEKTOR <i>TOTAL NUMBER ACCORDING TO SECTOR</i>	25	112							137
JUMLAH KESELURUHAN <i>GRAND TOTAL</i>									

LAIN-LAIN KEMALANGAN

Sektor Swasta

1. Melecur
2. Tergelincir dan terkena muka

Sektor Kerajaan

1. Di Patuk ular

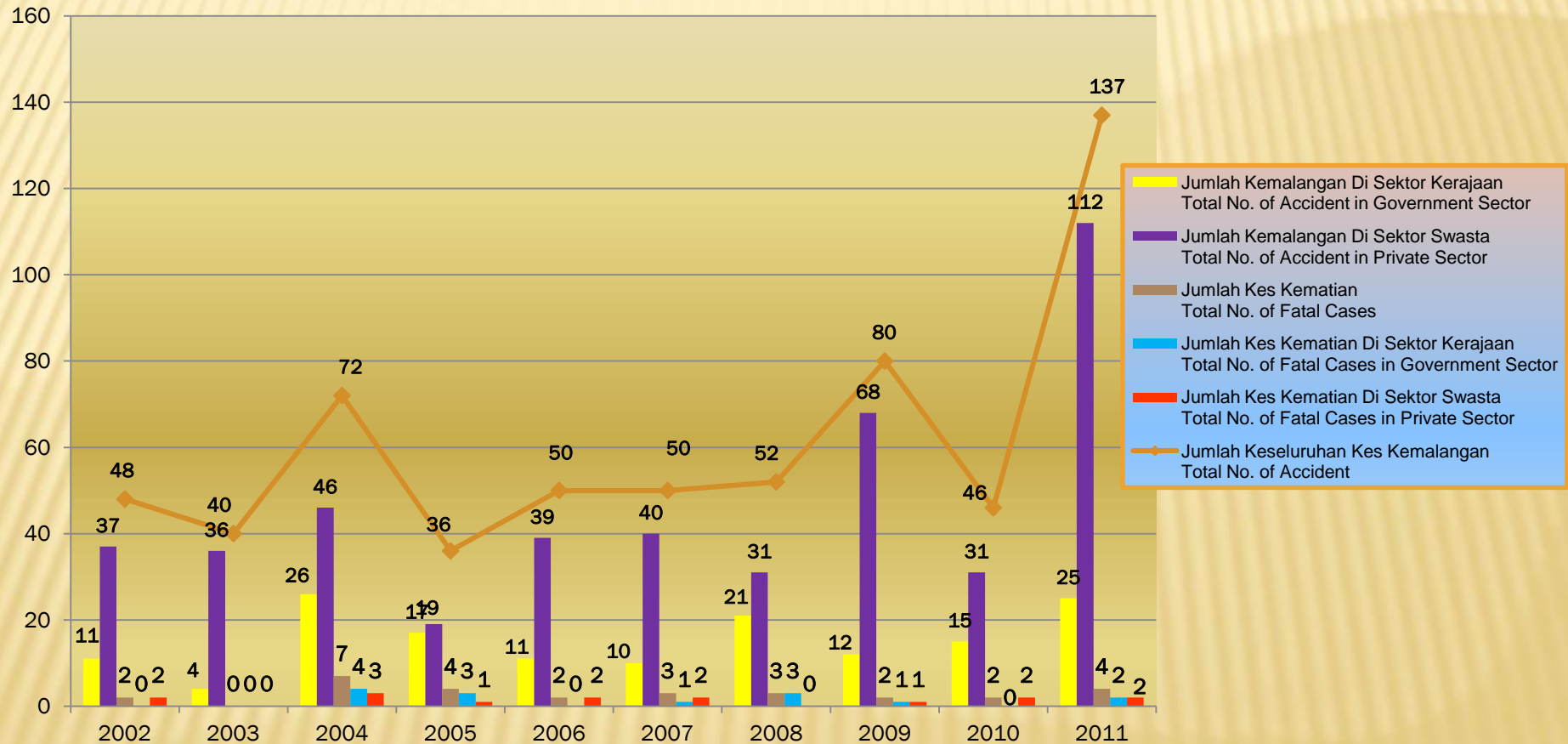
BILANGAN KES KEMALANGAN YANG DIPEROLEHI DARIPADA :

Bahagian Keselamatan dan Kesihatan Tempat Kerja, Jabatan Buruh	-	44 Kes
Jabatan Buruh, Kuala Belait	-	21 Kes
Bahagian Kesihatan, Keselamatan dan Alam Sekitar, Jabatan Kerja Raya	-	0 Kes
Unit Kesihatan Cara Kerja, Jabatan Perkhidmatan Kesihatan	-	77 Kes

SUMBER DATA DAN MAKLUMAT	:	DIPEROLEHI DARI BAHAGIAN KESELAMATAN DAN KESIHATAN TEMPAT KERJA, JABATAN BURUH / JABATAN BURUH, KUALA BELAIT / BAHAGIAN KESIHATAN, KESELAMATAN DAN ALAM SEKITAR, JABATAN KERJA RAYA & UNIT KESIHATAN CARA KERJA, JABATAN PERKHIDMATAN KESIHATAN
DATA SOURCE AND INFORMATION	:	OBTAINED FROM SAFETY AND HEALTH WORKPLACE SECTION, LABOUR DEPARTMENT / LABOUR DEPARTMENT, KUALA BELAIT / HEALTH, SAFETY AND ENVIRONMENT SECTION, PUBLIC WORKS DEPARTMENT & OCCUPATIONAL HEALTH UNIT, HEALTH DEPARTMENT



PERANGKAAAN JUMLAH KEMALANGAN INDUSTRI PEMBINAAN DI NEGARA BRUNEI DARUSSALAM YANG DILAPORKAN DARI TAHUN 2002 HINGGA 2011 **REPORTED ACCIDENT STATISTICS CONSTRUCTION INDUSTRY IN NEGARA BRUNEI DARUSSALAM FROM THE YEAR 2002 TO 2011**



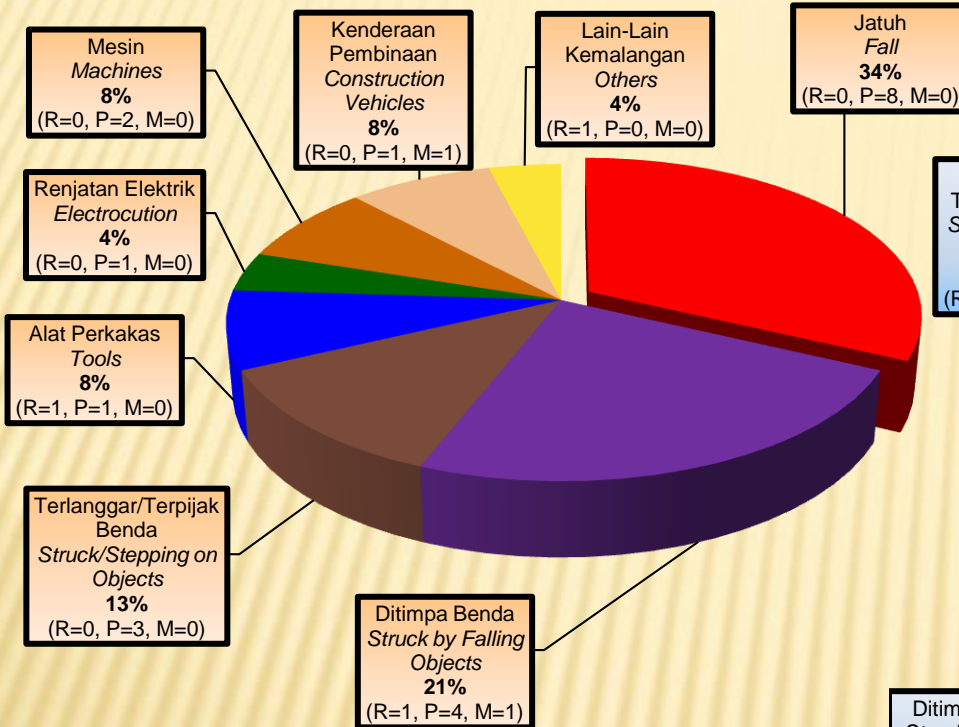
Sumber data dan maklumat : Diperolehi dari Bahagian Keselamatan dan Kesihatan Tempat Kerja, Jabatan Buruh / Jabatan Buruh, Kuala Belait / Unit Kesihatan Cara Kerja, Jabatan Perkhidmatan Kesihatan & Bahagian Kesihatan, Keselamatan dan Alam Sekitar, Jabatan Kerja Raya.

Data source and information : Obtained from Safety and Health Workplace Section, Labour Department, / Labour Department, Kuala Belait / Occupational Health Unit, Health Department & Health, Safety and Environment Section, Public Works Department.

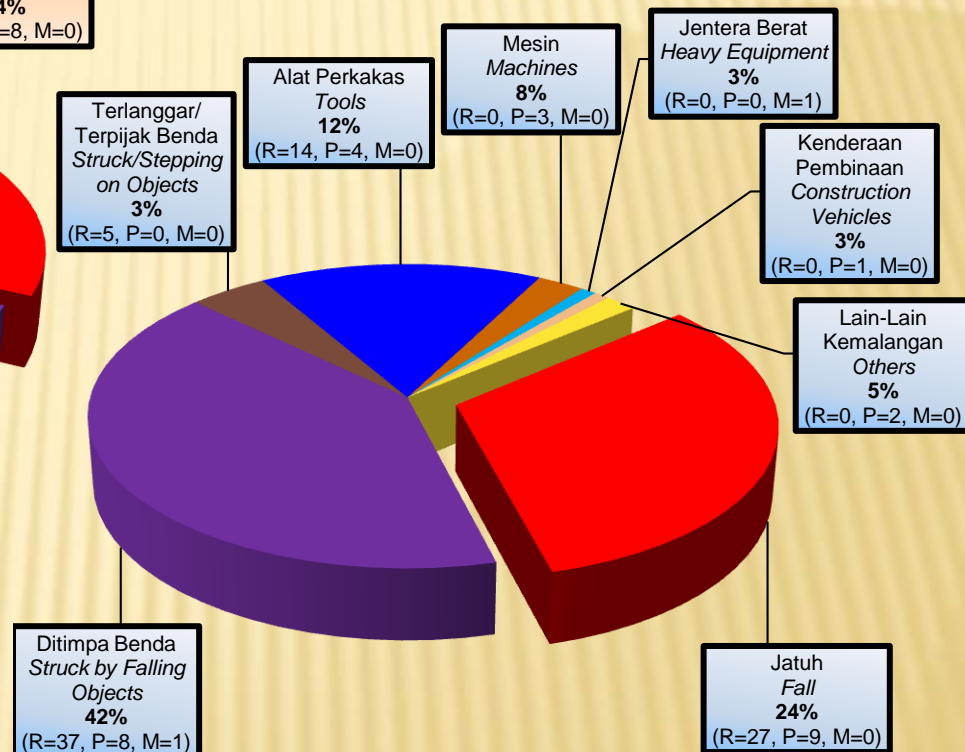
PERATUS JENIS KEMALANGAN INDUSTRI PEMBINAAN YANG DILAPORKAN SEPANJANG TAHUN 2011

PERCENTAGE OF TYPES OF ACCIDENT REPORTED IN THE CONSTRUCTION INDUSTRY FOR THE YEAR 2011

Jumlah Kemalangan Di Sektor Kerajaan (25 Kes) Total Reported Accident in Government Sector (25 Cases)



R = RINGAN (MINOR)
P = PARAH (SERIOUS)
M = KEMATIAN (FATALITY)



Jumlah Kemalangan Di Sektor Swasta (112 Kes) Total Reported Accident in Private Sector (112 Cases)

Sumber data dan maklumat : Diperolehi dari Bahagian Keselamatan dan Kesihatan Tempat Kerja, Jabatan Buruh / Jabatan Buruh, Kuala Belait / Unit Kesihatan Cara Kerja, Jabatan Perkhidmatan Kesihatan & Bahagian Kesihatan, Keselamatan dan Alam Sekitar, Jabatan Kerja Raya.

Data source and information : Obtained from Safety and Health Workplace Section, Labour Department, / Labour Department, Kuala Belait / Occupational Health Unit, Health Department & Health, Safety and Environment Section, Public Works Department.

SAFE



UNSAFE



SAFETY GEARS

SAFE



UNSAFE



SITE TIDINESS

SAFE



UNSAFE

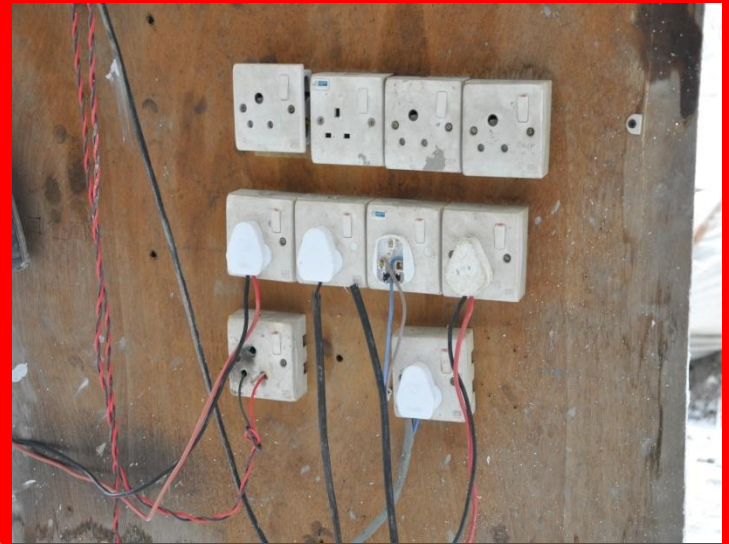


SITE ACCESS

SAFE



UNSAFE



TEMPORARY ELECTRICAL WORKS

SAFE



UNSAFE



TOOLS & ELECTRIC-POWERED MACHINERY

SAFE

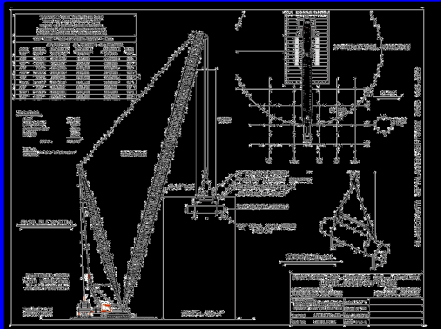


<div style="text-align: center;"> <h1>LIFTING PLAN</h1> </div>		CSSW	
		Health and Safety Management System	
		STANDARD FORM	
Contract No.	Form Ref. No.	CSSW/SF/CM/009	Date:
Contract Name			

marked not applicable. Additional information should be attached if required *

- | | |
|--------------------------------------------------------------------------------------------------------------------------------------------------------------------------------------------------------------------------------------------------------------------------------------------------------------------------------------------------------------------------------------------------------------------------------------------------------------------------------------------------------------------------------------------------------------------------------------------------------------------------------------------------------------------------------------------------------------------------------------------------------------------------------------------------------------------------------------------------------------------------------------------------------------------------------------------------------------------------------------------------------------|-----------------------------------------------------------------------------|
| <p>4. Have any new equipment been carried out and communicated to all personnel involved?</p> <p>5. Is a situation of emergency or a danger of explosion or fire?</p> <p>6. Details of the work to be done, its nature, weights, lifting methods, etc.</p> <p>7. Have the best lifting equipment of the ground been assessed?</p> <p>8. Details of Ground Conditions. Have checks been carried out for gas, services, ditches, drains, etc. and the results communicated to all personnel involved?</p> <p>9. What sort of type of oxygen supplier must be required?</p> <p>10. Are the correct duties allocated for the lifting operations being undertaken?</p> <p>11. Name of named personnel appointed as Signaller / Signaplayer</p> <p>12. Name of named personnel appointed as Supervisor</p> <p>13. Name of named personnel appointed as Crane Operator</p> <p>14. Drivers' Names & CPC's Card Number & expiry date.</p> <p>15. Approved Method of Communication</p> <p>16. Type of Lift</p> | <p>Radio / Hand Signals / Other (Detail)</p> <p>Single / Consistent use</p> |
| <p>Types of Equipment, Detail make, model, and capacity.</p> <p>17. Date of Last Examination of lifting equipment (provide details of tests conducted & by whom)</p> <p>18. Name Address & Tel. No. of Crane Owner / Hire</p> <p>19. Details of lifting time to be used i.e. how long will the lift be, on, spider beam etc. include details of full examination within 6 months and how lifting plan will be used</p> <p>20. Details of where lifting equipment will be sited or operating</p> <p>21. Will lift times be lifted?</p> <p>22. To be completed by crane operator (understand manufacturer's, codes for the crane, load chart, set down area, vehicle, loading / unloading procedures, etc. and any other warnings, Signing the lift for use for lift. (Signature)</p> <p>23. Are there any other requirements?</p> <p>24. Date and Duration of Operation.</p> <p>25. Name / Signature of Appointed Person completing this plan.</p> | |

Construction Services South West		Page 1 of 2	
Issue Date: 27/04/2011	Issue No.	Form No.	CSSWSF-cs0006



UNSAFE



5 4:31 PM

MECHANICAL (VEHICLES/HEAVY EQUIPMENT/PLANT)

SAFE



UNSAFE



SCAFFOLDING

SAFE



UNSAFE

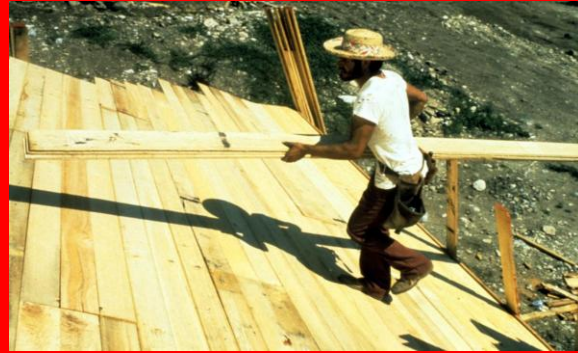


GAS/ARC WELDING CUTTING

SAFE



UNSAFE



ROOFWORKS

SAFE



UNSAFE



EXCAVATIONS

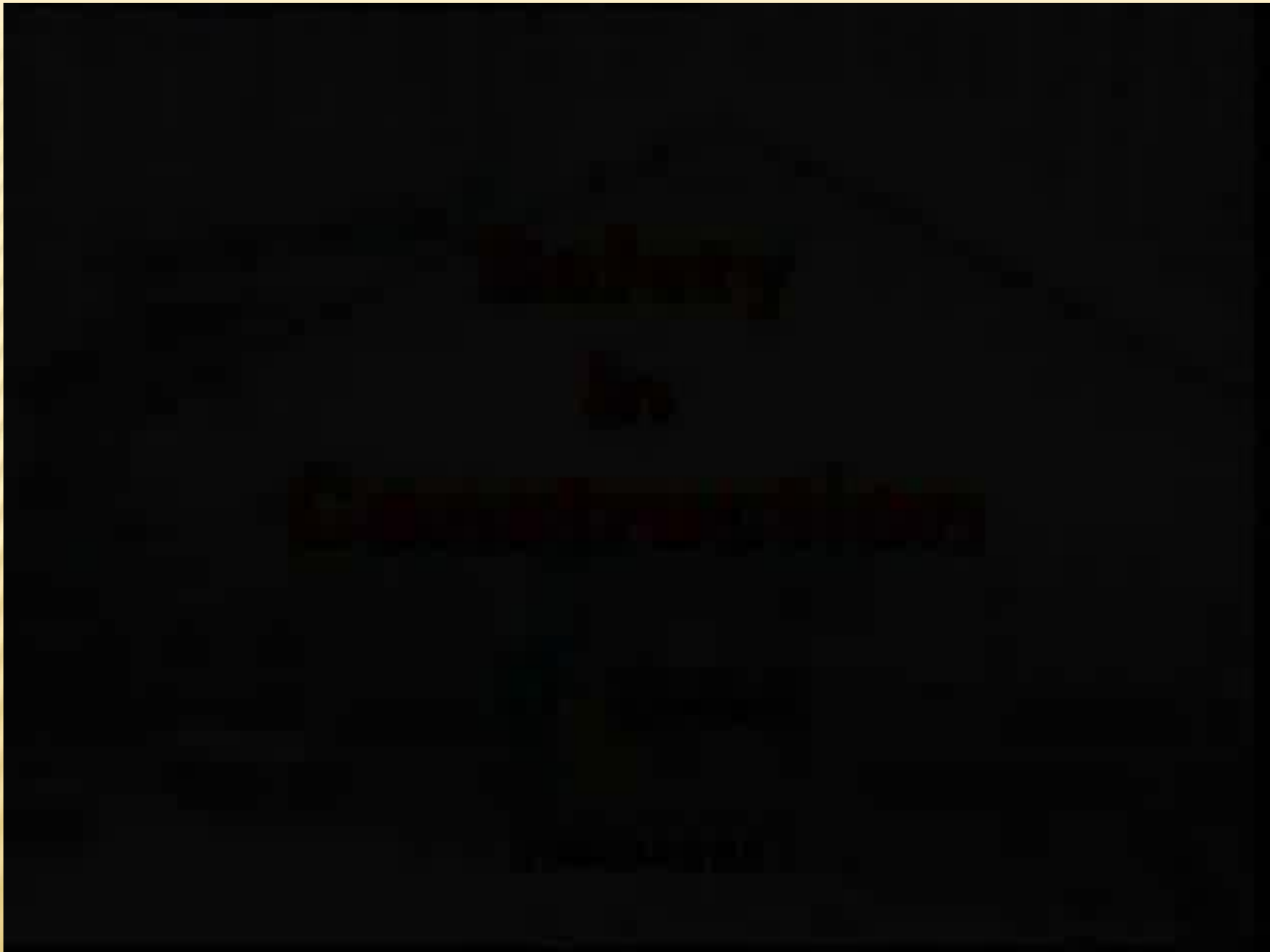
SAFE



UNSAFE



WORKER'S WELFARE & OTHER FACILITIES



THANK YOU

**SAFETY
FIRST**

**WORKING SAFELY
PREVENTS
ACCIDENTS**



**THINK SAFE
WORK SAFE
HOME SAFE**

